



Enduring Value

ITC :
Leading ESG
Performance

ICICI Securities' Virtual
ESG Conference
24th August 2021

CONTRIBUTING TO AGRICULTURE, MANUFACTURING & SERVICES

Leading FMCG Marketer

Branded Packaged Foods



Personal Care Products



Education & Stationery Products



Matches & Agarbatti



Iconic Hotels : Trailblazer in Responsible Luxury



Agri Business: Pioneering Rural Transformation



Paperboards, Paper & Packaging: Environmental Stewardship



Branded Packaged Foods



Personal Care Products



Education & Stationery Products



Matches & Agarbatti



AN EXEMPLAR IN **TRIPLE BOTTOM LINE** PERFORMANCE



Among the
Top 3
Contributors to the
Exchequer in the
private sector in India

Gross Sales Value
Rs 74979 cr
For the year ended
March 2021

FMCG Products Reach
150 mn
Households
In India

**Carbon
Positive**
16 years

**Water
Positive**
19 years

**Solid Waste
Recycling Positive**
14 years

Over **41 %** of Total Energy from Renewable Sources

Sustainable Livelihoods for **6 million** people



Enduring Value

ITC's
Sustainability
Vision

SUSTAINABILITY CHALLENGES



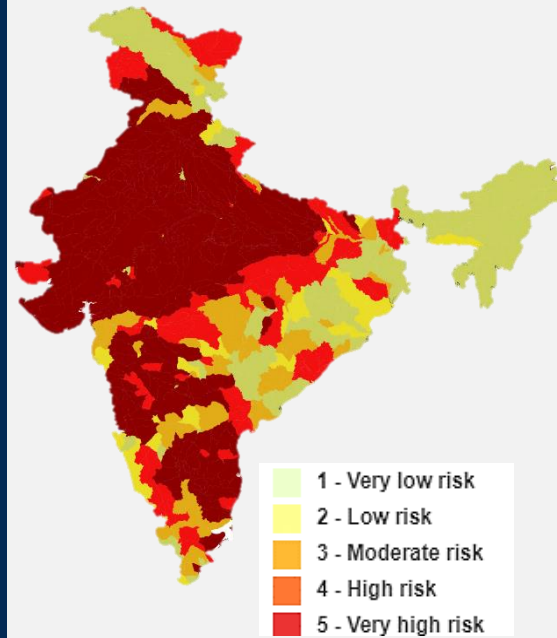
One-third
of the
world's
poor lives
in India



12 million
join
the work
force every
year

Water Stress Map of India

World Resources Institute (WRI)



54% of
India
is
water
stressed



Increasing
incidents of
Extreme
Weather
events

**BUSINESS
CANNOT
SUCCEED
IN SOCIETIES
THAT FAIL**

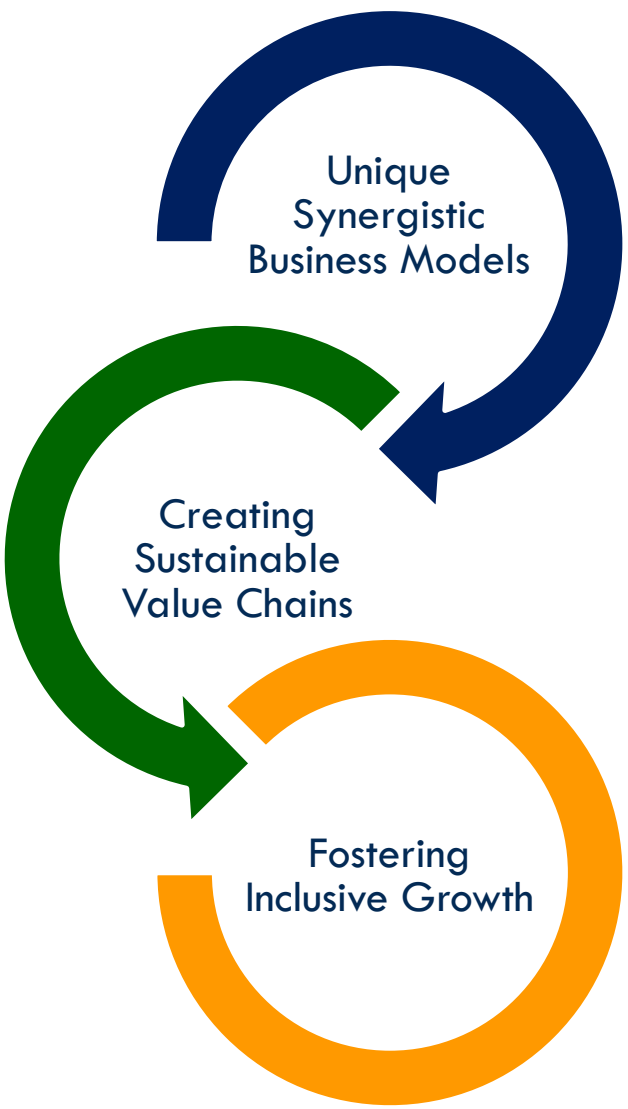


**NEW PARADIGM
NEEDED**

**RESPONSIBLE
COMPETITIVENESS**

- ✓ **COMPETITIVE**
- ✓ **INCLUSIVE**
- ✓ **SUSTAINABLE**

SUSTAINABILITY APPROACH FOR SUPERIOR ESG PERFORMANCE



Embedding Sustainability Across the Business Value Chain

EMBEDDING SUSTAINABILITY ACROSS THE VALUE CHAIN							
Responsible Sourcing	Sustainable Manufacturing & Services		Sustainable Packaging	Sustainable Logistics & Warehousing	Delighting Consumers	Responsible End-of-Life Management	
Regenerative & Climate Resilient Agriculture	Optimal Resource Use	Health & Safety & Employee Wellbeing	ITC Hotels' 'Wellness' Focus on Health, Hygiene & Safety	Improving Recyclability of Packaging	Strategically located Manufacturing Units: Optimising Distance to Market	Responsible Marketing	Sustainable Models for Managing Post-Consumer Packaging Waste
Sustainable Forestry	Climate Resilience & Water Risk Management	Commitment to Highest Standards of Quality & Product Safety	Managing Talent, Upholding Human Rights & Fostering Diversity	Phasing out Hard to Recycle Plastics	Strategically located Automated Warehouses	Consumer Satisfaction & Feedback Management	
Sustainable Bamboo Plantations	Investments in Renewable Energy & Energy Efficiency	Cutting Edge R&D & Innovation		Sustainable Packaging Solutions for the Industry: Omega & Filo Series			
Responsible Sourcing in line with Supplier's Code of Conduct	Green Buildings			FSC Certified Paper and Paperboards for Packaging			

Deepening Engagement in ITC's Core Catchments – Agri & Factory

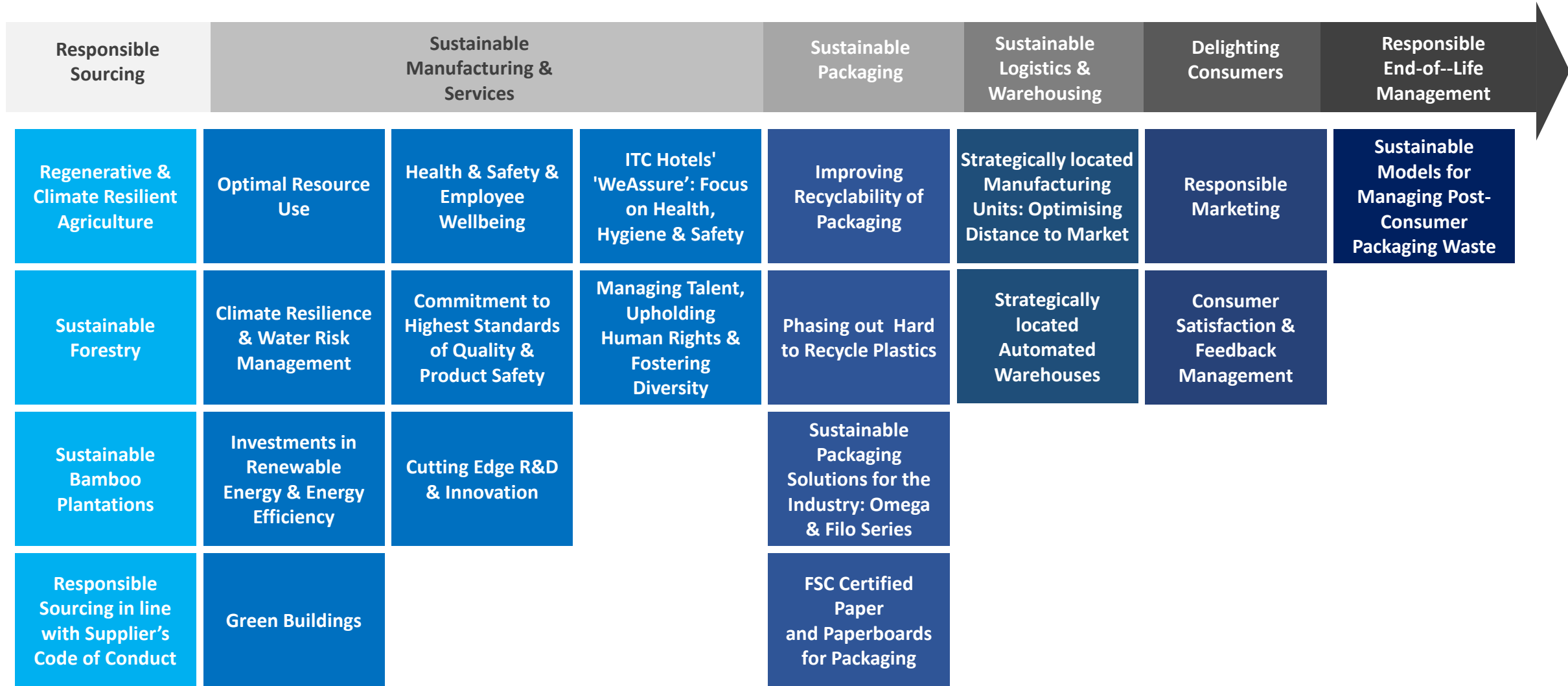


Public-Private-People Partnerships

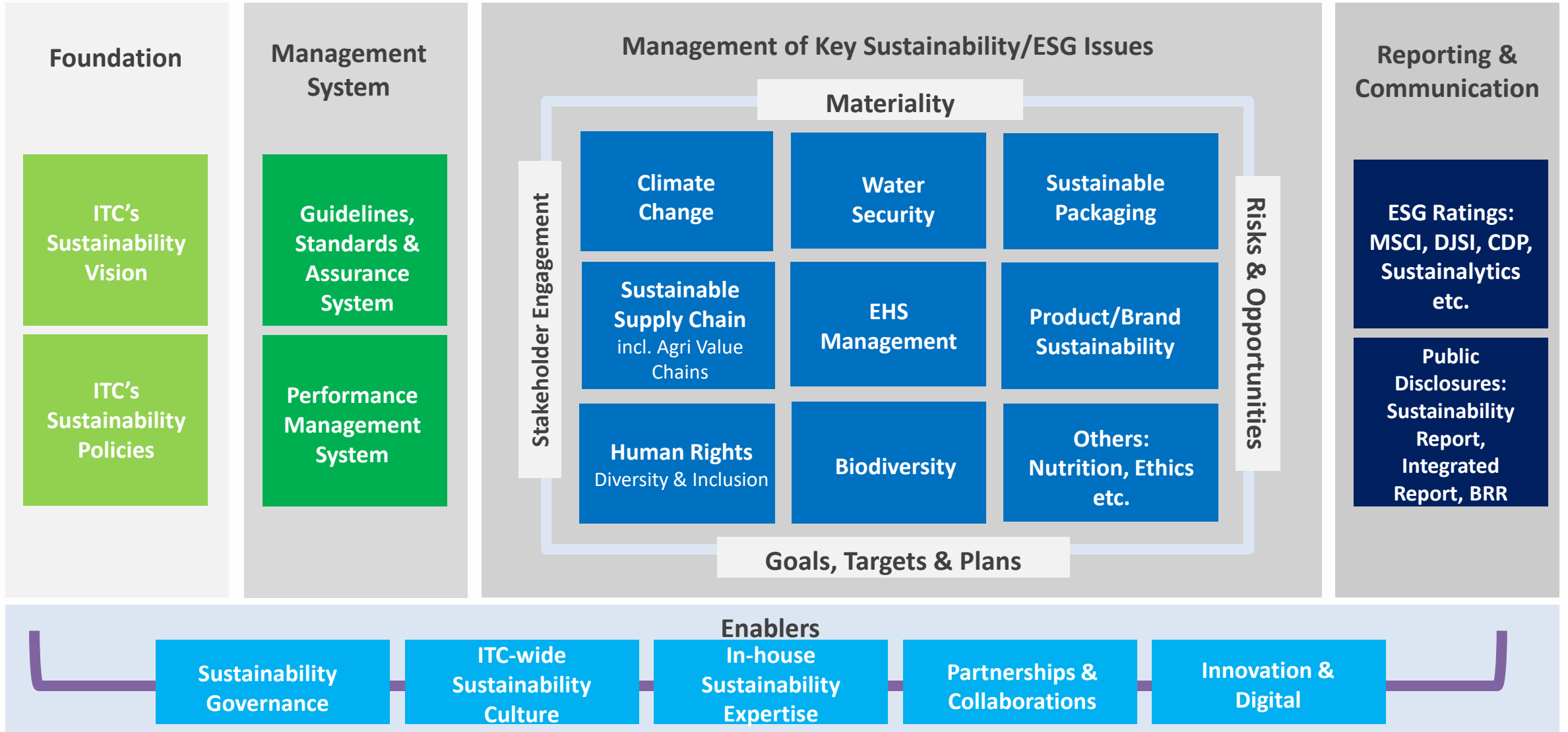
Strengthening Capabilities Driving Behavioural change



EMBEDDING SUSTAINABILITY ACROSS THE VALUE CHAIN



ITC's Sustainability Framework



ESG KEY FOCUS AREAS

Environment

- Climate Resilience
- Water Security
- Afforestation
- Bio-Diversity
- Renewable Energy
- Green Buildings
- Solid Waste Mgmt
 - Focus on Plastics
- Physical Risk Mitigation

Social

- Sustainable Livelihoods
- Empowering Farmers
- NextGeneration Agriculture
- Building Resilient Communities
- Public-Private-People partnerships
- Employee welfare
- Diversity & Inclusion
- Supply Chain Partners
- Sustainable Choices for Consumers
- Supporting strategic institutions

Governance

- 3-tier Governance Structure
- Ethics & Integrity
- Code of Conduct
- Strategic Risk Management
- Board oversight and approved policies to guide strategy and action
- Sustainability Compliance & Review
- Remuneration Policy

Recognitions



ITC rated AA by MSCI-ESG
Highest amongst Global Tobacco cos

Member of
Dow Jones
Sustainability Indices

ITC has been included in the Dow Jones Sustainability
Emerging Markets Index

Powered by the S&P Global CSA



ITC PSPD unit, Kovai, awarded Alliance for Water Stewardship
Platinum-level Certification, highest recognition for water
stewardship in the world -- second facility globally, first in India



ITC Windsor Becomes First Hotel in the World to achieve LEED Zero
Carbon Certification



Enduring Value

AWARDS & ACCOLADES



Inaugural UNDP-ICC Award



World Business & Development Award 2012 at the Rio+20 UN Summit



Sustainability Leadership Award, Zurich



Porter Prize 2017 for 'Excellence in Corporate Governance and Integration'



The Stockholm Challenge Award



Development Gateway Award



ICSI National Awards for Excellence in Corporate Governance 2020



Publishing a GRI based Sustainability Report since 2004 - 18th Report
Aligned to the latest GRI Standards (including Food Sector supplement) and meets the "In Accordance - Comprehensive" criteria



Publishing a stand-alone Integrated Report since 2017-18



The Sustainability Report is also mapped to TCFD recommendations.



Highest level of third party assurance by Deloitte - 'Reasonable Level' as per ISAE 3000
GHG inventory also independently verified by Deloitte - 'Reasonable Assurance' level in accordance with ISO 14064:2006.



Enduring Value

Addressing Climate Risk & Competitiveness

A COMPREHENSIVE APPROACH TO CLIMATE CHANGE

Our Approach
Encompasses:

Climate Change
Mitigation

Climate Change
Adaptation

Resilience

..is based on Ground Level
Assessments covering:

Physical Assets

Key Agri Value Chains

And, is supported by a Robust
Internal Mechanism for Tracking

Requirements of
Global ESG
Frameworks

Climate-specific
Frameworks: CDP,
TCFD

ADOPTING A LOW CARBON FOOTPRINT



Renewable Energy – Over 41% of energy consumed



**33 Platinum rated Green Buildings;
World's Greenest Luxury Hotels chain**



**ITC Windsor– world's first
LEED Zero Carbon certified hotel**



**ITC Sankhya: World's First LEED Platinum
Data Centre**



**Continuous Reduction in Specific
Energy/Water Consumption**

REPLENISHING NATURAL RESOURCES



WATER



AFFORESTATION



BIODIVERSITY



ITC'S PAPER VALUE CHAIN LEVERAGING TECHNOLOGY & INNOVATION





Clonal Saplings grown in Nursery





Round Colour Grading

Enduring Value

ITC'S AFFORESTATION INITIATIVE

Greening over 8,75,000 acres



• Social Contribution

➤ Providing Livelihoods to poor Tribals and Marginal Farmers

➤ Creating 160 million person days of employment

• Environmental Impact

➤ Carbon Sequestration

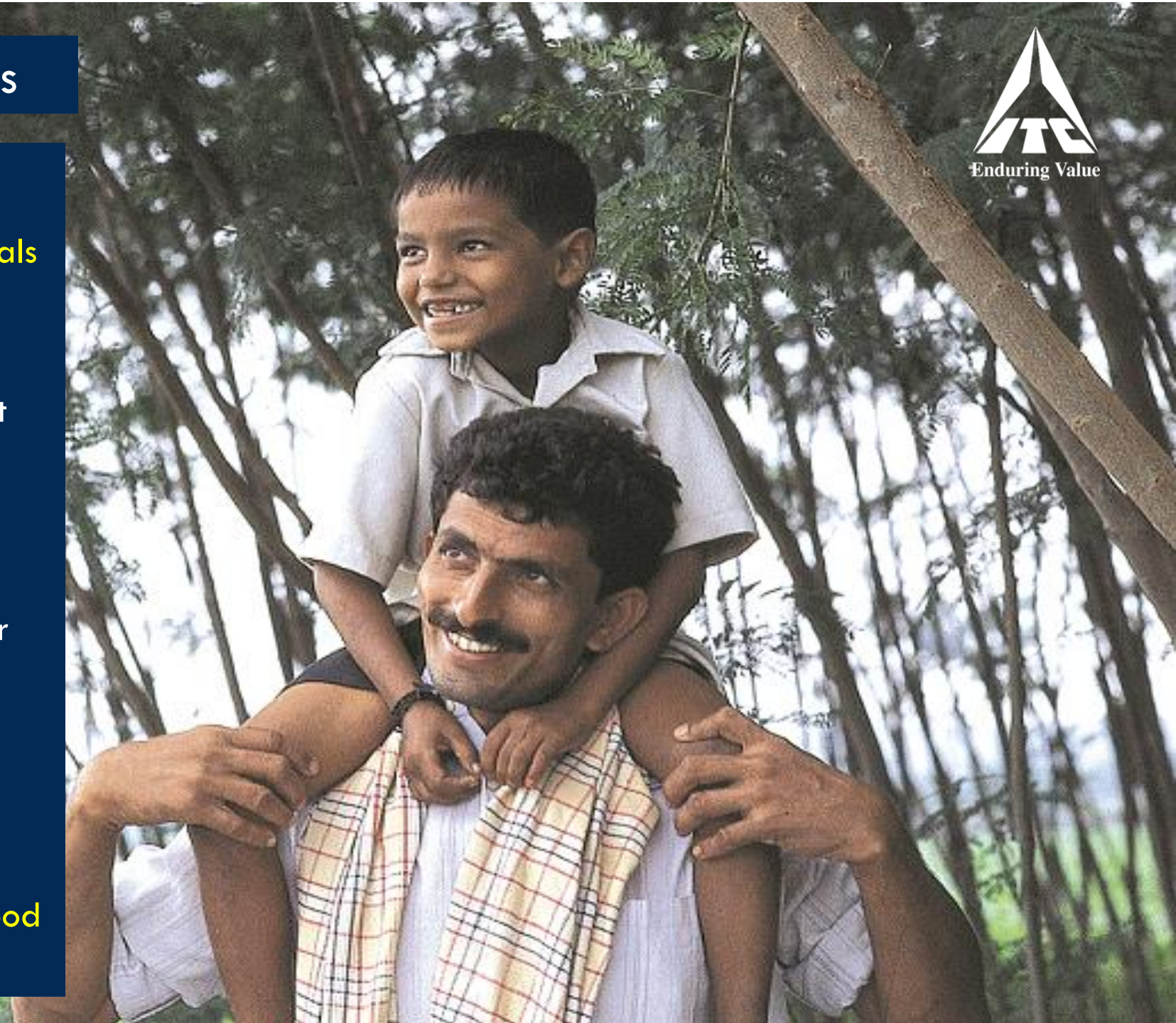
➤ Augmenting Green Cover

➤ Top Soil Retention

➤ Water Recharge

• Economic Benefit to ITC

➤ A Competitive Source of Pulp-wood for ITC's Paper mill



POWERING THE PAPER VALUE-CHAIN



Packaging solutions



classmate

BIODIVERSITY



Ahmednagar, Maharashtra



Actions

- Eco-restoration of village commons & pasturelands
- Reduce pressures on forest through fringe area development

Spread & Coverage

- Over 44,000 acres conserved across 7 States
- PPP with Wasteland Development Board of Rajasthan to restore 2,47,000 acre commons
- PPPs with Maharashtra & Telangana forest departments
- Knowledge partnership with IUCN to develop template for 'Sustainable Agriscapes'



World's largest LEED Platinum Luxury Hotel – ITC Grand Chola, Chennai

World's Highest Rated LEED Platinum building – ITC Green Centre, Gurugram

World's First Hotel to be LEED Zero Carbon Certified – ITC Windsor, Bengaluru

PIONEERING GREEN BUILDINGS

33 
buildings of the Company have achieved Platinum certification by USGBC-LEED/IGBC (as on 31st March, 2020).



41.3%



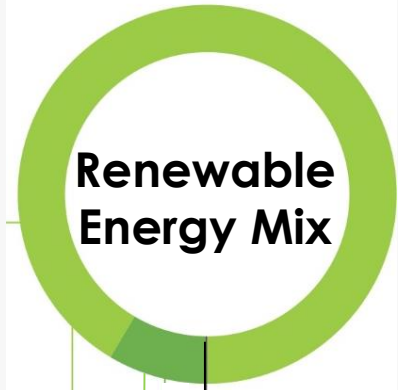
of ITC's energy is from renewable sources

12 ITC units met more than

90%



of their electrical energy requirements from renewable sources in 2020-21



91.5%
Biomass

8.2%
Wind

0.3%
Solar



Enduring Value

Addressing Water Security

Climate Change in India's Agriculture



“.....The last time we saw crops was during our grandfather's time.....”

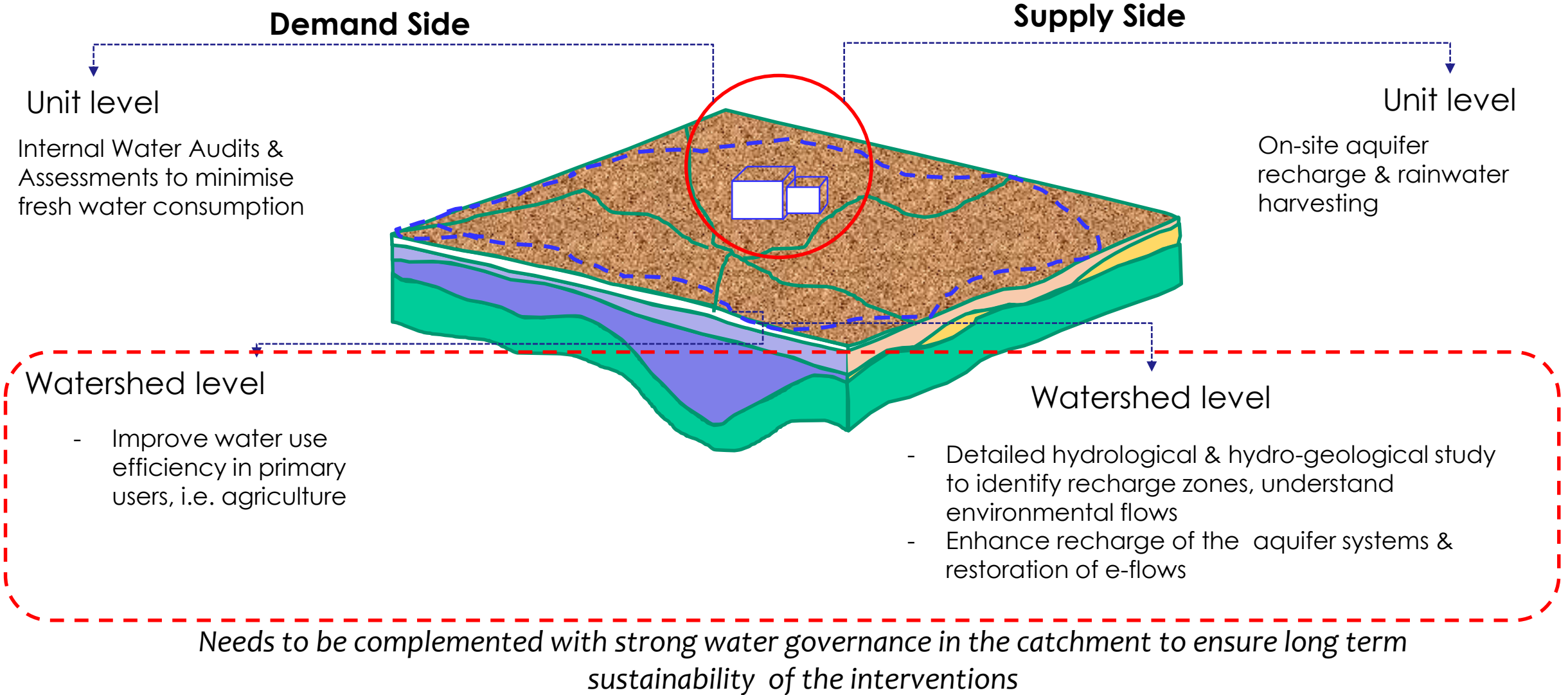


**Water Security
around
catchments**



**Drought
Proofing
Agriculture**

Water Security: Our Approach





PARTICIPATORY WATERSHED PLANNING

RAINWATER HARVESTING POTENTIAL



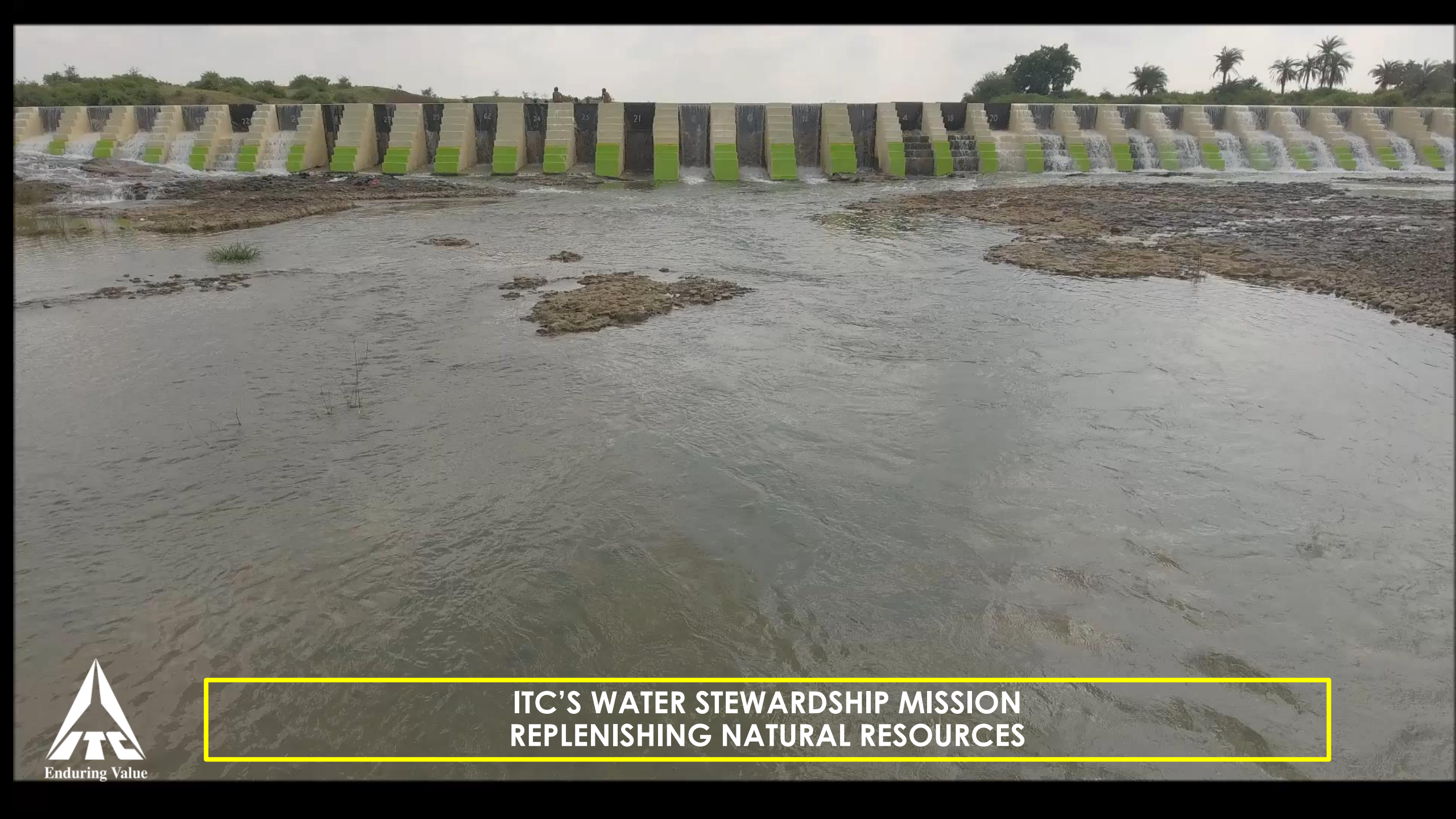
1.2 MILLION
ACRES

22,000
WATER
STRUCTURES

5 times

Net Water Consumption
in 2030

Target



**ITC'S WATER STEWARDSHIP MISSION
REPLENISHING NATURAL RESOURCES**

WATER USER GROUPS



IMPROVING WATER USE EFFICIENCY IN AGRICULTURE 'MORE CROP PER DROP'

Sugarcane
0.20 lakh acres



Pune: drip & Seedling

85.47 m cu.m
water saved

Wheat
2.34 lakh acres



Munger – Zero Till

72.62 m cu.m
water saved

Rice
0.36 lakh acres



Chandauli – DSR

46.80 m cu.m
water saved

Others
(Onion, Banana,
Coconut)
0.10 lakh acres



Coimbatore – Banana Drip

3.95 m cu.m
water saved

- **Water Savings achieved in 1 year is 208 m cu.m as against 41.95 m cu.m of fresh water harvesting done in 20 years**
- Reduce water use and costs, improve yields
- **3.02 lakh acres covered**

UNIT WATER SECURITY PROGRAMME

- Ambitious plan to achieve water positive status in all its catchments
- Two phased approach
 1. Phase -1 (Offsets): Water harvesting equal to factory usage
 2. Phase -2 (Water Positive status): Fill entire catchment's water balance gap through supply & demand management work

Programmes implemented in all units categorised critical by Central Groundwater Board (CGWB)

CGWB Categorization	No of ITC units	Programme Implemented
Over Exploited	3	3
Critical	1	1
Semi-critical	4	3
Safe	18	9
Total	26	16



Enduring Value

Next Generation
Agriculture
& Inclusive
Growth

POWERING NEXT GENERATION AGRICULTURE

Agri Sector Critical to India's Growth Story

Employs 50% of workforce but accounts for only 14% of India's GDP



Core Challenges

- ✓ Productivity
- ✓ Sustainability
- ✓ Market Access



Empowering 4 Million Farmers

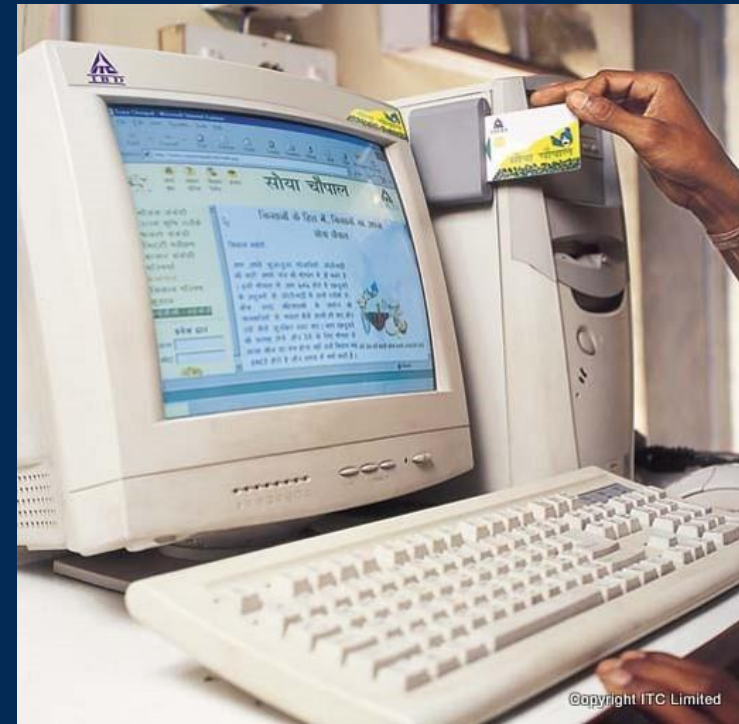
e-Choupal Digital Infrastructure



Copyright ITC Limited



Copyright ITC Limited



Copyright ITC Limited



Demonstration Farms Choupal Pradarshan Khet





ITC in Agriculture : **Baareh Mahine Hariyali**

Leveraging Technology & Innovation to **Enhance Productivity**



Varietal Improvement



Short Duration Varieties



Cropping Intensity



Choupal Pradarshan Khet



Water Management



Agri Best Practices



Zero Tillage



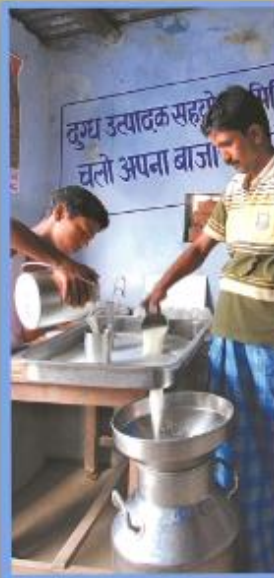
Farm Mechanisation



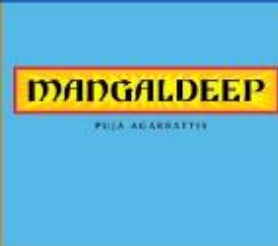
Collaboration with NITI Aayog for improvement of agriculture in 27 aspirational districts - trained 2.5 million farmers

ITC FOODS BRANDS - DRIVING AGRI VALUE CHAINS

ITC'S WORLD-CLASS INDIAN BRANDS ANCHOR INCLUSIVE VALUE CHAINS



Empowering the Nation's Farmers

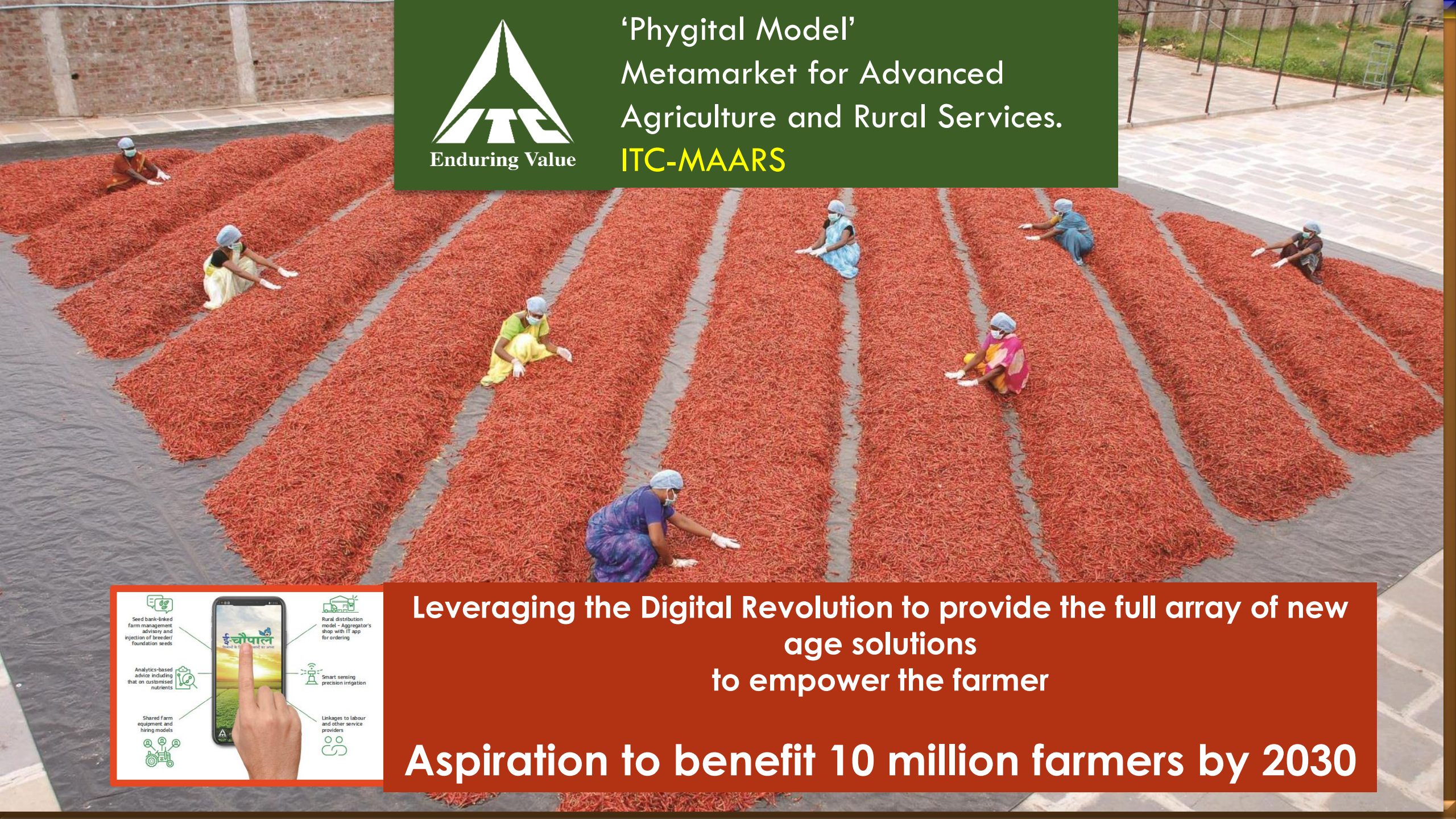




Enduring Value

'Phyigital Model'
Metamarket for Advanced
Agriculture and Rural Services.

ITC-MAARS

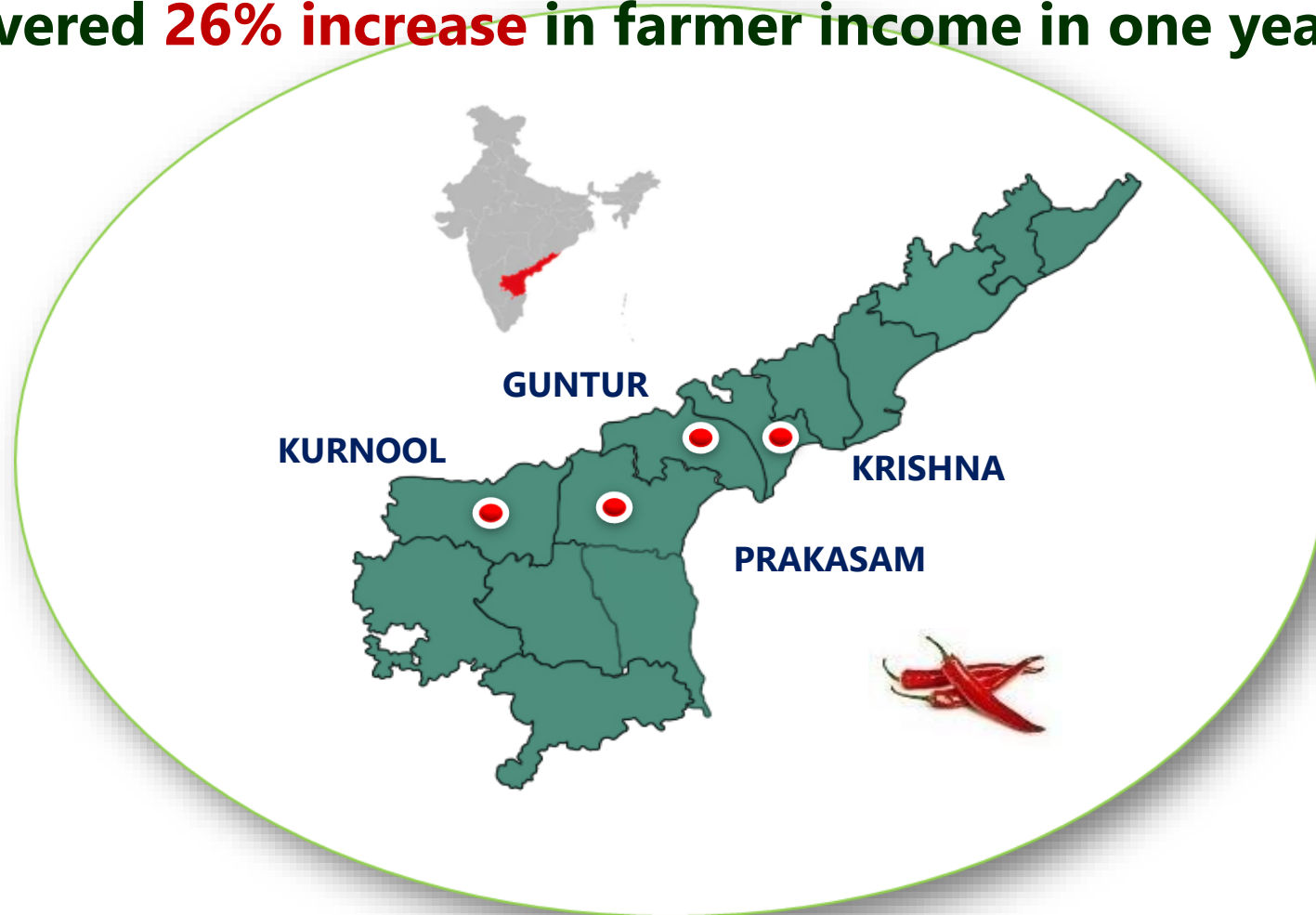


Leveraging the Digital Revolution to provide the full array of new
age solutions
to empower the farmer

Aspiration to benefit 10 million farmers by 2030

**An Illustrative Example in Andhra Pradesh, India
Delivered **26% increase** in farmer income in one year**

25,000
acres



10,000
Farmers

General Farmer

Productivity
17.9
Quintals/Acre

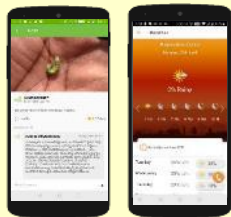
Avg. Price
100.1
Rs./Kg*

* As per 2020-21 season

Cost of Cultivation
56.6
Rs./Kg

Farmer Net Returns
77,631
Rs./Acre

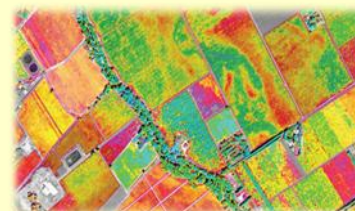
Key Interventions



Digital Advisory



e-Krishi Sevaks / FPOs



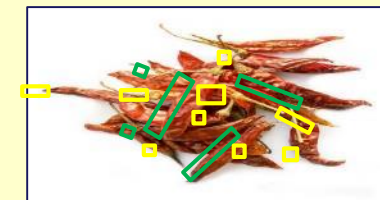
Remote Sensing



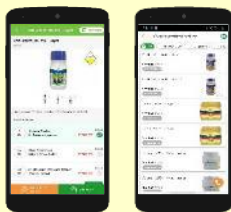
Crop Monitoring



Post-Harvest Technologies



Digital Quality Assaying



Input e-Marketplace



Drone Spraying Mechanization



Integrated Pest Mgmt. Kits

Project Farmer

Productivity
20.1
Quintals/Acre

Avg. Price
104.1
Rs./Kg

Cost of Cultivation
55.2
Rs./Kg

Farmer Net Returns
99,080
Rs./Acre

26% Increase in Net Returns

CLIMATE SMART AGRICULTURE

Weather
Smart

Water
Smart

Seed /
Breed
Smart

Carbon/
Nutrient
Smart

Market
Smart

Covered over 2.5 lakh farmers across 8,000 villages.

A pilot at scale reduced GHG emission of select crops by 47%,
whilst enhancing net returns to farmers between 41% to 87%.

The climate-smart agriculture initiative will be progressively extended to cover 3 million acres by 2030.

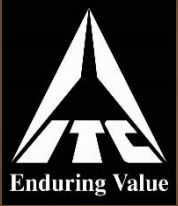


Livestock Development

Providing integrated animal husbandry services to nearly 20,00,000 milch animals.



Empowering women
Over 78,000 rural women entrepreneurs



Skill Development Initiative

Over 97,000 youth trained



**ITC's Rural Education Programme
Benefitting 825,000 children**



Nearly 38,400 individual sanitary units constructed



TOWARDS A CIRCULAR ECONOMY – ITC WELL-BEING OUT OF WASTE (WOW)



- ✓ Covering 15 million citizens
- ✓ Livelihoods for 17,000 waste collectors

MANAGING WASTE



Running Behavioral Change Programmes for Citizens to Ensure Source Segregation



Creating Replicable, Scalable & Sustainable Models of Solid Waste Management



Sustaining & Enhancing ITC's Status as Solid Waste Recycling Positive



Ensuring that 100% of Packaging is Reusable, Recyclable or Compostable

✓ Plant to recycle Multi-Layered Plastic in Pune

ITC's solution for Pune's multi-layered plastic waste

Rujuta.Parekh
@timesgroup.com

Pune: ITC Limited has collaborated with wastepickers' cooperative SWaCH and Shakti Plastic Industries to recycle multi-layered plastic (MLP) into plastic granules, thus, avoiding its dumping at Uruli Fursungi.

MLP is a material made using several layers of different polymers and a metallic film in some cases. It is mainly used for packaging of wafers, chocolates, biscuits, sauces, ready-to-eat-meals and other food products.

Under the initiative, 100 mega tonne (MT) of post-consumer MLP waste has been recycled into plastic granules. MLP disposal became one of the biggest challenges in Pune after the state government's ban on single-use plastics in March last year.

A survey conducted by SWaCH last year had found that MLP formed the largest component of plastic waste collected in the city. A wastepicker percep-



The ITC Limited facility for recycling MLP waste into plastic granules

scrap dealers would not even accept it. Due to this, for nearly the last decade, MLP waste was going to the landfill."

"The product, which had no value earlier, now fetches us Rs 2.5/kg. We receive the payment at the end of the month," the wastepickers said.

According to Harshad Barde from SWaCH, nearly two tonnes of MLP is gathered and sent for sorting and baling to a centre at Fursungi on a daily basis. "SWaCH has a network of 3,500

decentralizing the process and having such facilities in different parts of the city to reduce the transportation cost and increase efficiency," he said.

The MLP which reaches Palghar is shredded before further processing. "The material is then run through a wash to clean it. After drying, the MLP is converted into lumps using hot water. The lumps are again shredded. These shreds are then put into a machine that converts the material into plastic strings. A cutter at the end of the machine then cuts the strings into granules," Rahul Poddar from Shakti Plastic Industries said.

The granules are then sold to manufacturers of plastic products like chairs, buckets, mugs, stationery and others. Chitranjan Dar, the group head of environment, health and safety, projects and R&D at ITC Limited, said, "We had been looking intently at SWaCH for the last 56 years as they had a formula for waste collection, which was not present anywhere else in the country. We thought of partnering with them on MLP recy-

Bio-degradable boards



Completely Biodegradable under composting conditions



Barrier against liquids/grease etc. at par with traditional plastic coated boards



Omega Bev : Exclusively for paper cups



Omega Barr : Deep freeze applications

Recyclable boards



Completely recyclable in existing standard recycling conditions



Excellent oil and grease resistant properties



Filo Serve : Food serving applications



Filo Pack : Food delivery application

Sustainable Packaging



Bio-Seal

Bio compostable packaging solutions for packaged/fast-food & Personal Care industries. Launched on commercial scale.



Oxy Block

Recyclable structure to provide barrier properties for packaged foods, edible oils etc. Commercialisation under progress



SCALE AND IMPACT

- **6,100** e-Choupals, **35,000** villages, **4 million** farmers
- **8,75,000** acres of forestry
 - **160 million** person-days of employment
- **12,53,000** acres of watershed development
- **20,00,000** milch animals covered
- **8,25,000** children benefiting from supplementary education
- **78,000** sustainable livelihoods for rural women
- **97,000** youth trained through Vocational Training programmes
- **38,400** Sanitation Units



SOCIAL INVESTMENT INITIATIVES

Horizon 1- Sustainable Livelihoods Today

Social Forestry



Achieved: 394,678*
Target: 630,000*

Watershed Development



Achieved: 1,231,251*
Target: 2,200,000 *

Sustainable Agriculture



Achieved: 771,119*
Target: 3,000,000*

Biodiversity



Achieved: 44,044*
Target: 250,000*

Women's Empowerment



Covered: 77,851
Target: 150,000

Horizon 2: Creating Capabilities For Tomorrow

Education



Achieved: 808,462
Target: 1,300,000

Youths Trained



Achieved: 93,980
Target: 282,000

Waste Management (Households)



Achieved: 731,272
Target: 600,000

Toilets Built



Achieved: 38,153
Target: 40,000

* - in acres



Enduring Value

CONTRIBUTIONS TO UN SDG'S



Women's Economic Empowerment

Climate Smart Agriculture

Integrated Animal Husbandry



Sustainable Products

Sustainable Supply Chains

Sustainable Agriculture

Integrated Animal Husbandry



Primary Education



Diversity and Equal Opportunity

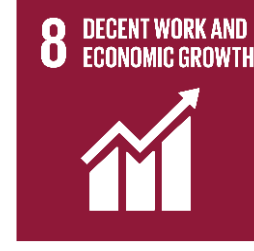
Women's Economic Empowerment



Water Security for All

Sanitation & Solid Waste Mgmt

Primary Education



Occupational Health & Safety

Vocational Training

Women's Economic Empowerment



Climate Resilience

Managing Waste



Climate Resilience

Social Forestry

Climate Smart Agriculture

Integrated Animal Husbandry

Water Security for All



Water Security for All

Climate Smart Agriculture

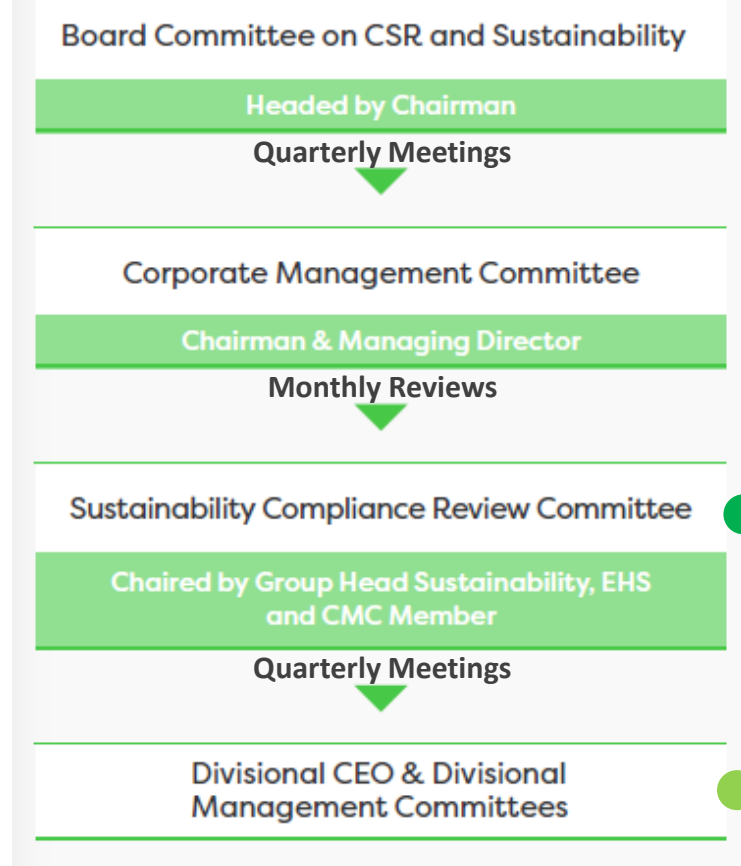
Social Forestry

Governance & ESG Oversight

**3-Tiered
Governance
Structure**



ESG OVERSIGHT @ ITC



The SCRC presently comprises **seven senior members** of management, with its Chairman being **Group Head – Sustainability & R&D**, and a **member of the Corporate Management Committee**. Other members represent:

- EHS & Sustainability
- Human Resources
- Accounts & Procurement
- Legal
- Social Investments Programmes
- Corporate Communications

ITC Businesses also have Business-level Sustainability Committees.

These Sustainability Committees also have representation from Diverse Functions - Operations, EHS & Sustainability, Nutrition, Marketing, HR, Packaging, R&D & Finance.

ESG POLICIES

ITC's Suite of Board approved ESG Policies addresses ITC's Material ESG issues, and is also aligned to the requirements of Global ESG Disclosure Frameworks:



Policy implementation is monitored using defined KPIs.

SCRC reviews implementation on a quarterly basis and submits its report to the CMC.

The CSR & Sustainability Committee of the Board reviews progress annually.

ITC's ESG Policies:

- Policy on Sustainable Supply Chain and Responsible Sourcing
- Code of Conduct for Suppliers and Service Providers
- Policy on Environment, Health and Safety
- Policy on Resource Efficiency
- Policy on Biodiversity Conservation
- Policy on Deforestation
- Policy on Stakeholder Engagement
- Policy on Responsible Advocacy
- Policy on Product Responsibility
- Policy on Freedom of Association
- Policy on Diversity and Equal Opportunity
- Policy on Prohibition of Child Labour and Prevention of Forced Labour at the Workplace
- Policy on Tax
- Code of Conduct
- CSR Policy
- **Remuneration Policy (*with linkages to ESG performance*)**

Other Policies are there at the Business Level like Responsible Marketing, Animal Welfare, Food & Nutrition



Enduring Value

Consumers
Partners
Supply-Chain

ITC Life Sciences & Technology Centre



Over 350 scientists and
900 patents filed

**Delivering Future Products
Aimed at Health, Hygiene,
Immunity and Well-being**

ITC-LSTC has been recently acknowledged as one of the leading and largest innovation centres in India with strong presence in nutrition, health and well-being, plant breeding, genetics, microbiology, genomics and proteomics.

Centres of Excellence established in Biosciences, Agri-sciences and Materials among others.

Future-ready platforms put in place, in areas aligned to market opportunities, enabling agile and purposeful innovation.

120+ New Launches in FY21

Insight + Innovation >> Impact

Hygiene++, Protection & Care



Savlon

Hexa range, Disinfectants, Masks & Wipes



Nimyle

Floor Cleaner

Nimewash

Fruits & Veggie Cleaner;
Nimeasy Dish Wash Gel

'Good For You' & 'Free From'



Aashirvaad Nature's Super Food

Organic Atta & Dals



Sunfeast

Digestive Range



Aashirvaad

Crystal & Proactive Salt



B Natural

Soups & Juices

Convenience & On-the-Go



Aashirvaad

On-the-Go Range



Aashirvaad

Ready to Cook



ITC Master Chef

All purpose Gravies



ITC Master Chef

Frozen Snacks



ITC Farmland

Frozen Vegetables



Sunbean

Beaten Coffee

Global Platinum Level
certification by DNV



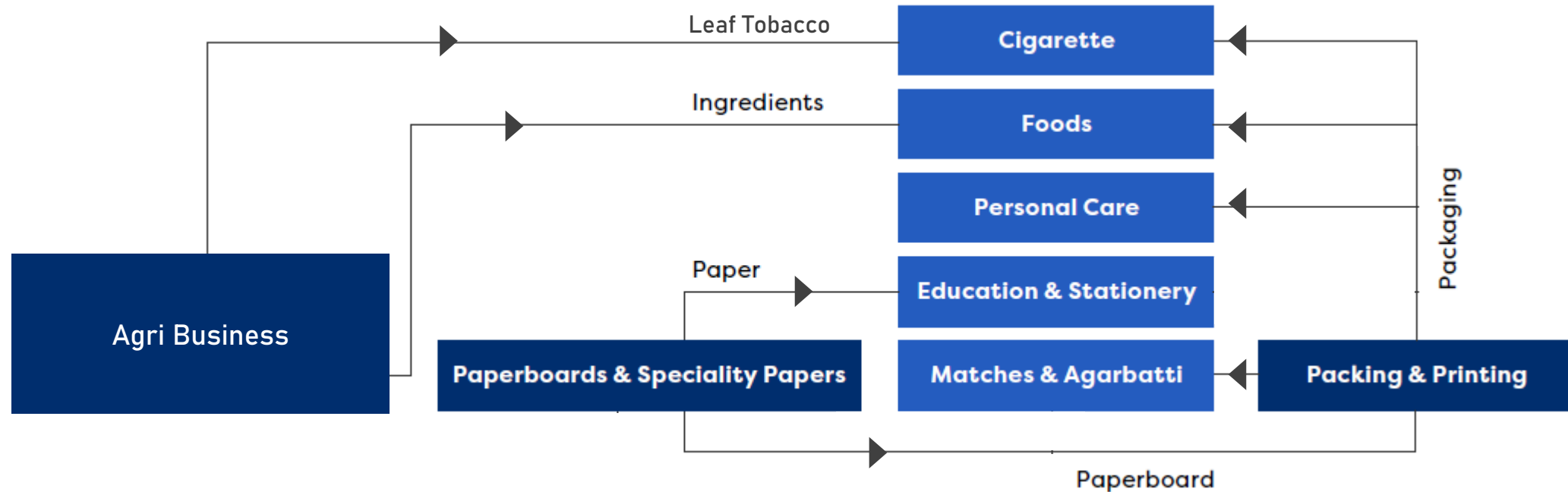
The WeAssure programme is ITC Hotels' commitment towards health, hygiene and safety, designed in collaboration with medical professionals and disinfection experts to further enhance the existing hygiene and cleaning protocols.



SUPPLY CHAIN – VERTICALLY INTEGRATED

ITC Brands

Empowering Indian Farmers and anchoring inclusive and sustainable value chains.





Enduring Value

KEY AGRI COMMODITIES – SUMMARY OF INTERVENTIONS

	Leaf Tobacco	Wheat	Pulpwood	Spices & Chilli	Potato	Dairy
ITC Brands	Cigarettes					
Major Risks in the Supply Chain	Deforestation	Water Scarcity	Deforestation	Safety & Quality	Quality	Safety & Quality
	Human Rights	Soil Health	Soil & Biodiversity	Pesticide Use	Climate Resilience	
	Climate Resilience	Climate Resilience	Climate Resilience			
	Pesticide Use	Productivity				
ITC's Region Specific Interventions	Energy Plantations, Alternate Fuel	R&D - Climate Resilient Varieties	ITC's Social & Farm Forestry	Integrated Crop Management	Climate Resilient & Superior Varieties	Farmer-led Collection Model
	Energy Conservation in Barns	Zero Tillage, Crop Nutrition	High Yielding Disease Resistant Saplings	Food Safe Systems	Efficient Irrigation Practices	Extension Services – Productivity, Hygiene
	Human Rights & Farm Safety Audits	E-Choupal – Market Linkage	Agro Forestry, Inter Cropping	Good Agricultural Practices (GAP)	Integrated Pest Management	
	Climate Smart Hybrids		Extension Services, Soil Health Mgmt.	Organic Production		



Enduring Value

TRACEABILITY & CERTIFICATIONS

Leaf Tobacco

Wheat

Pulpwood

Spices & Chilli

Potato

Dairy

ITC Brands

Cigarettes



Traceability



ITC e-Choupal 4.0 Crop Monitoring Tool



ITC e-Choupal Network
6100 Kiosks, 35,000 Villages



Chain of Custody Certification



ITC e-Choupal 4.0 Crop Monitoring Tool

Direct Linkages to Farmers through Programmes on Seed Potatoes, and Sustainable Agriculture

Farmer-led Collection Model - Enables Farmer-wise, Village-wise Tracing

Certification

Sustainable Tobacco Programme 2.0 (STP 2.0) Audits

-



-

-



Enduring Value



Enduring Value

Nurturing the
Workplace of
Tomorrow

DIVERSITY & EQUAL OPPORTUNITY

- ▶ With women constituting about 73% of the workforce, ITC's Pudukkottai unit in Tamil Nadu is a beacon of diversity with regard to employment of women
- ▶ ITC's Foods unit at Nanjangud in Karnataka is the first FMCG factory in the region to deploy women workforce across all shifts. Women constitute close to 62% of the workforce at the Nanjangud unit.
- ▶ ITC now employs 47 differently abled persons across business, and continues to guide industry initiatives to create inclusive workplaces



Reflections Series

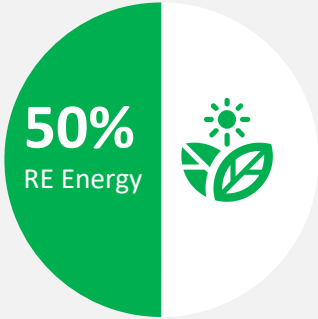
Inspiring stories



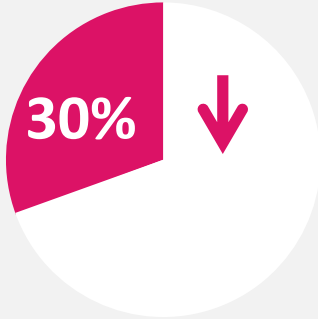
RE!MAGINING THE FUTURE

Sustainability 2.0
A Bolder & Ambitious
Agenda

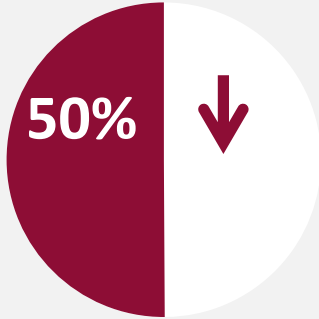
Renewable Energy (RE)



Specific Energy Consumption*



Specific GHG Emissions*



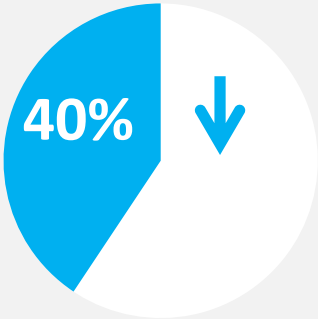
Sustainable Packaging Plan



Supporting Sustainable Livelihoods



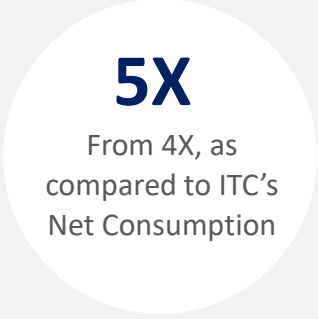
Specific Water Consumption*



Water Security for All



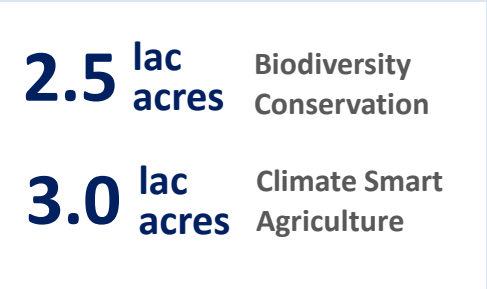
Rainwater Harvesting Potential



Plastic Neutrality



Biodiversity & Agriculture



**2018-19 Baseline*

Proactively work towards achieving 'Net Zero' emission status.

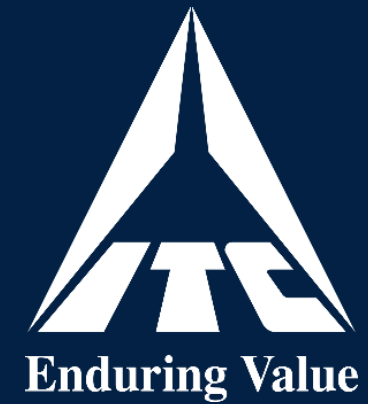
A passion for
profitable growth....



....in a way that is sustainable.....



.... and
inclusive





Enduring Value

Sab
Saath
Badhein

NATION FIRST

THANK YOU