



ITC Limited  
Virginia House  
37 J. L. Nehru Road  
Kolkata 700 071, India  
Tel. : 91 33 2288 9371  
Fax : 91 33 2288 4016 / 1256 / 2259 / 2260

25<sup>th</sup> August, 2021

The Manager  
Listing Department  
National Stock Exchange of  
India Ltd.  
Exchange Plaza,  
Plot No. C-1, G Block  
Bandra-Kurla Complex  
Bandra (East)  
Mumbai 400 051

The General Manager  
Dept. of Corporate Services  
BSE Ltd.  
P. J. Towers  
Dalal Street  
Mumbai 400 001

The Secretary  
The Calcutta Stock  
Exchange Ltd.  
7, Lyons Range  
Kolkata 700 001

Dear Sirs,

**Participation in Investor Conference**

We write to advise, pursuant to Regulation 30 of the SEBI (Listing Obligations and Disclosure Requirements) Regulations, 2015, that the Company's representative(s) virtually attended the 'ICICI Securities ESG e-Conference' organised by ICICI Securities Limited on 24<sup>th</sup> August, 2021, and made a presentation at the said conference.

A copy of the presentation made is enclosed.

Yours faithfully,

ITC Limited

(R. K. Singhi)

Executive Vice President &  
Company Secretary

Encl: as above



Enduring Value

## ITC : Leading ESG Performance

ICICI Securities' Virtual  
ESG Conference  
24th August 2021





# CONTRIBUTING TO **AGRICULTURE, MANUFACTURING & SERVICES**

## Leading FMCG Marketer

### Branded Packaged Foods



### Personal Care Products



### Education & Stationery Products



### Matches & Agarbatti



## Agri Business: Pioneering Rural Transformation



## Iconic Hotels : Trailblazer in Responsible Luxury



## Paperboards, Paper & Packaging: Environmental Stewardship





## Branded Packaged Foods



## Personal Care Products



## Education & Stationery Products



### Matches & Agarbatti





# AN EXEMPLAR IN **TRIPLE BOTTOM LINE** PERFORMANCE



Among the  
**Top 3**  
Contributors to the  
Exchequer in the  
private sector in India

Gross Sales Value  
**Rs 74979 cr**  
For the year ended  
March 2021

FMCG Products Reach  
**150 mn**  
Households  
In India

**Carbon  
Positive**  
**16 years**

**Water  
Positive**  
**19 years**

**Solid Waste  
Recycling Positive**  
**14 years**

Over **41 %** of Total Energy from Renewable Sources

Sustainable Livelihoods for **6 million** people





Enduring Value

# ITC's Sustainability Vision



# SUSTAINABILITY CHALLENGES



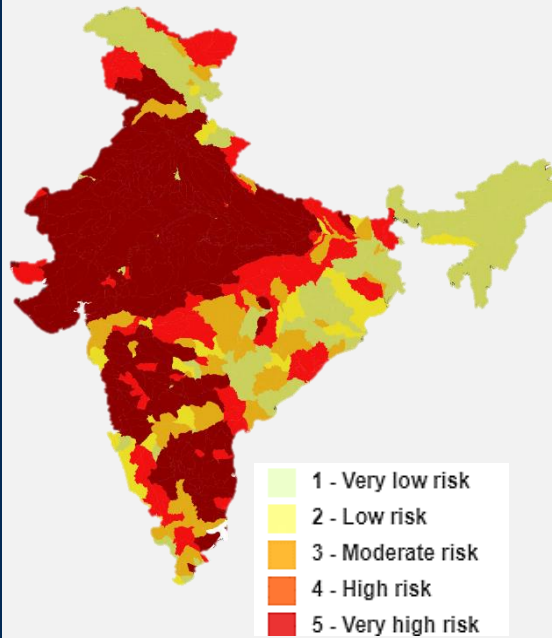
One-third  
of the  
world's  
poor lives  
in India



12 million  
join  
the work  
force every  
year

## Water Stress Map of India

World Resources Institute (WRI)



54% of  
India  
is  
water  
stressed



Increasing  
incidents of  
Extreme  
Weather  
events



**BUSINESS  
CANNOT  
SUCCEED  
IN SOCIETIES  
THAT FAIL**



**NEW PARADIGM  
NEEDED**

**RESPONSIBLE  
COMPETITIVENESS**

- ✓ **COMPETITIVE**
- ✓ **INCLUSIVE**
- ✓ **SUSTAINABLE**

# SUSTAINABILITY APPROACH FOR SUPERIOR ESG PERFORMANCE

Unique  
Synergistic  
Business Models

Creating  
Sustainable  
Value Chains

Fostering  
Inclusive Growth

## Embedding Sustainability Across the Business Value Chain

EMBEDDING SUSTAINABILITY ACROSS THE VALUE CHAIN							
Responsible Sourcing	Sustainable Manufacturing & Services			Sustainable Packaging	Sustainable Logistics & Warehousing	Delighting Consumers	Responsible End-of-Life Management
Regenerative & Climate Resilient Agriculture	Optimal Resource Use	Health & Safety & Employee Wellbeing	ITC Hotels' 'WeAssure' Focus on Health, Hygiene & Safety	Improving Recyclability of Packaging	Strategically located Manufacturing Units: Optimising Distance to Market	Responsible Marketing	Sustainable Models for Managing Post-Consumer Packaging Waste
Sustainable Forestry	Climate Resilience & Water Risk Management	Commitment to Highest Standards of Quality & Product Safety	Managing Talent, Upholding Human Rights & Fostering Diversity	Phasing out Hard to Recycle Plastics	Strategically located Automated Warehouses	Consumer Satisfaction & Feedback Management	
Sustainable Bamboo Plantations	Investments in Renewable Energy & Energy Efficiency	Cutting Edge R&D & Innovation		Sustainable Packaging Solutions for the Industry: Omega & Filo Series			
Responsible Sourcing in line with Supplier's Code of Conduct	Green Buildings			FSC Certified Paper and Paperboards for Packaging			

## Deepening Engagement in ITC's Core Catchments – Agri & Factory

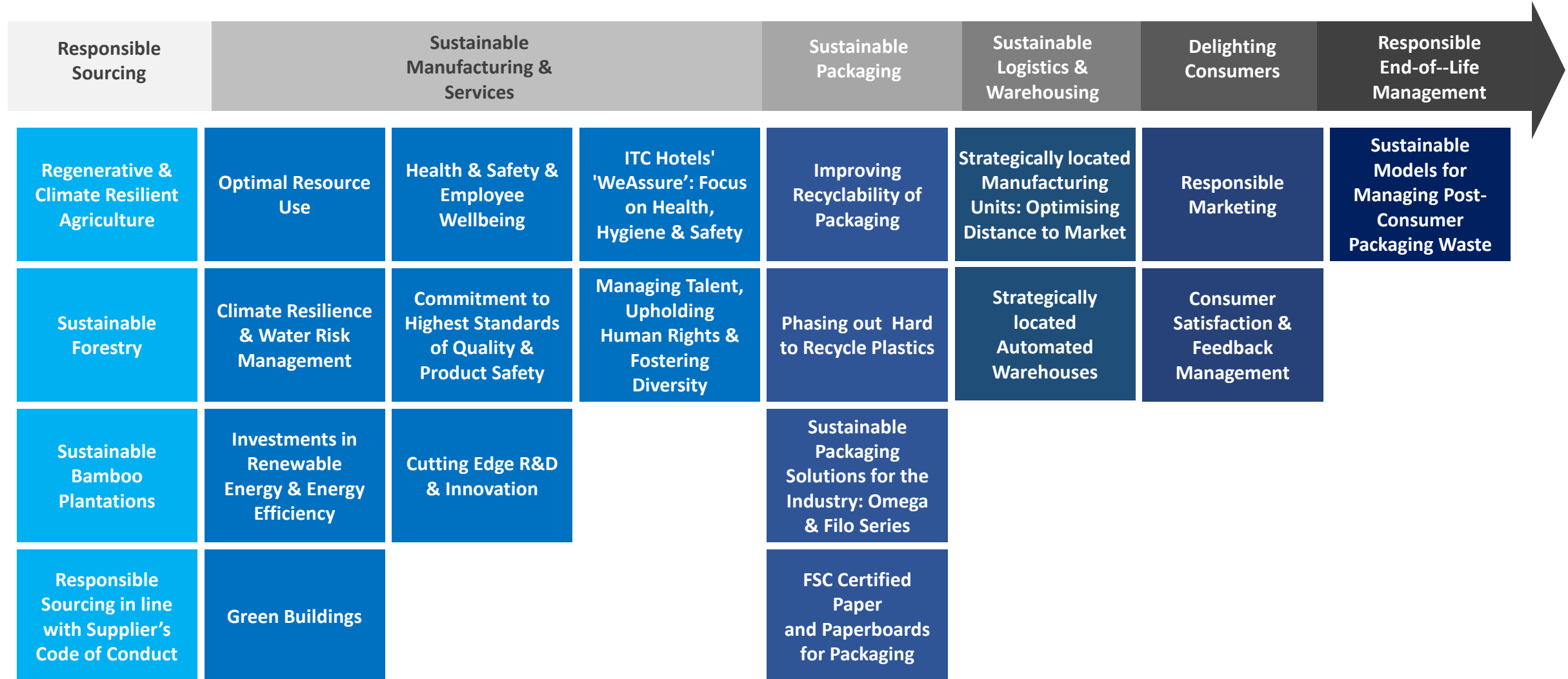


Public-Private-People  
Partnerships

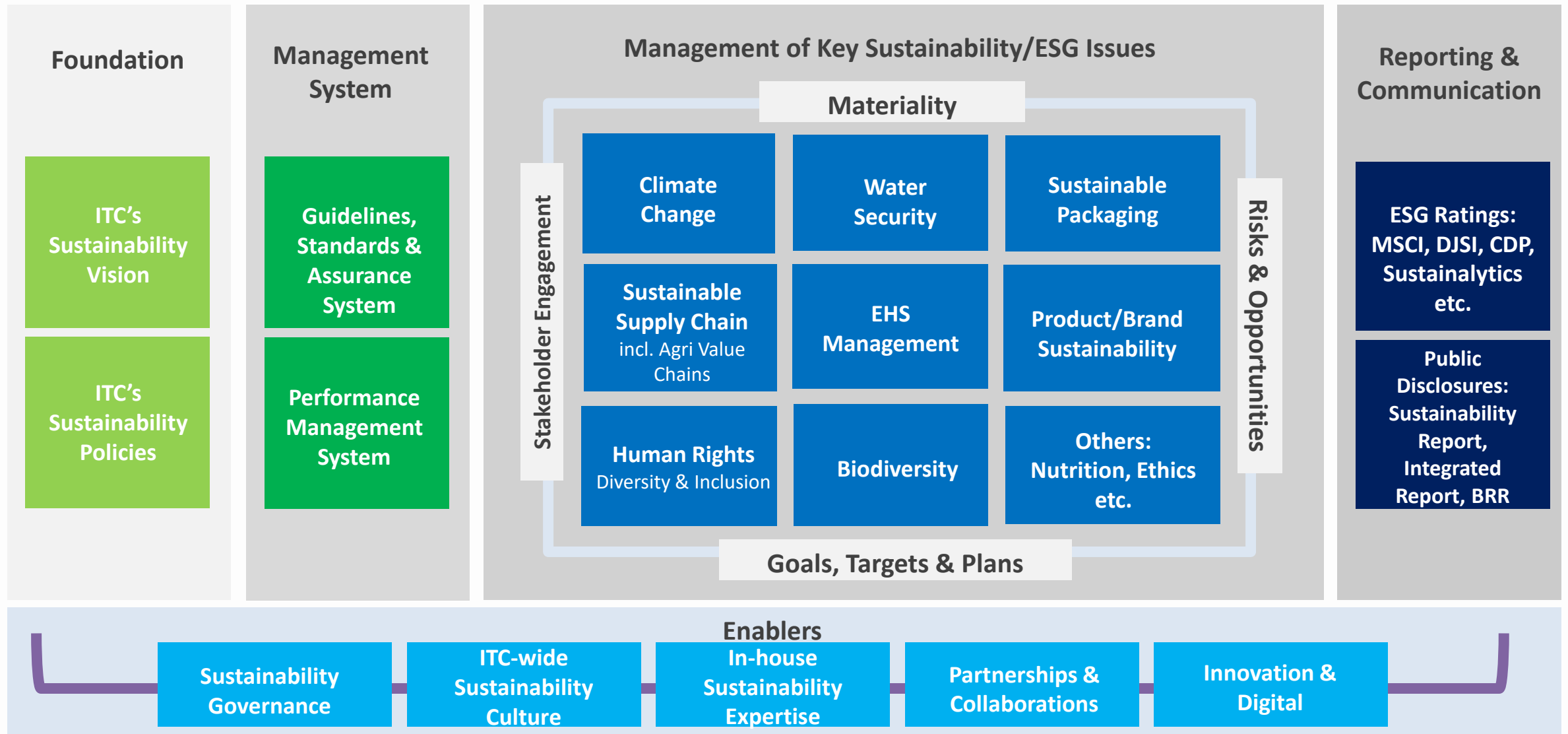
Strengthening Capabilities  
Driving Behavioural change



# EMBEDDING SUSTAINABILITY ACROSS THE VALUE CHAIN



# ITC's Sustainability Framework





# ESG KEY FOCUS AREAS

## Environment

- Climate Resilience
- Water Security
- Afforestation
- Bio-Diversity
- Renewable Energy
- Green Buildings
- Solid Waste Mgmt
  - Focus on Plastics
- Physical Risk Mitigation

## Social

- Sustainable Livelihoods
- Empowering Farmers
- NextGeneration Agriculture
- Building Resilient Communities
- Public-Private-People partnerships
- Employee welfare
- Diversity & Inclusion
- Supply Chain Partners
- Sustainable Choices for Consumers
- Supporting strategic institutions

## Governance

- 3-tier Governance Structure
- Ethics & Integrity
- Code of Conduct
- Strategic Risk Management
- Board oversight and approved policies to guide strategy and action
- Sustainability Compliance & Review
- Remuneration Policy



# Recognitions



**ITC rated AA by MSCI-ESG**  
Highest amongst Global Tobacco cos

Member of  
**Dow Jones  
Sustainability Indices**  
Powered by the S&P Global CSA

**ITC has been included in the Dow Jones Sustainability  
Emerging Markets Index**



**ITC PSPD unit, Kovai, awarded Alliance for Water Stewardship  
Platinum-level Certification, highest recognition for water  
stewardship in the world -- second facility globally, first in India**



**ITC Windsor Becomes First Hotel in the World to achieve LEED Zero  
Carbon Certification**

## AWARDS & ACCOLADES



Inaugural UNDP-ICC  
Award



World Business & Development Award  
2012 at the Rio+20 UN Summit



Sustainability Leadership  
Award, Zurich



Porter Prize 2017 for 'Excellence in  
Corporate Governance and Integration'



The Stockholm Challenge Award



Development Gateway Award



ICSI National Awards for Excellence in  
Corporate Governance 2020



# ITC SUSTAINABILITY REPORT

GRI

Publishing a GRI based Sustainability Report since 2004 - 18<sup>th</sup> Report  
Aligned to the latest GRI Standards (including Food Sector supplement) and meets the "In Accordance - Comprehensive" criteria



Publishing a stand-alone Integrated Report since 2017-18



TCFD | TASK FORCE ON CLIMATE-RELATED FINANCIAL DISCLOSURES

The Sustainability Report is also mapped to TCFD recommendations.

Deloitte.

Highest level of third party assurance by Deloitte - 'Reasonable Level' as per ISAE 3000  
GHG inventory also independently verified by Deloitte - 'Reasonable Assurance' level in accordance with ISO 14064:2006.



Enduring Value

# Addressing Climate Risk & Competitiveness



# A COMPREHENSIVE APPROACH TO CLIMATE CHANGE

**Our Approach  
Encompasses:**

**Climate Change  
Mitigation**

**Climate Change  
Adaptation**

**Resilience**

**..is based on Ground Level  
Assessments covering:**

**Physical Assets**

**Key Agri Value Chains**

**And, is supported by a Robust  
Internal Mechanism for Tracking**

**Requirements of  
Global ESG  
Frameworks**

**Climate-specific  
Frameworks: CDP,  
TCFD**

# ADOPTING A LOW CARBON FOOTPRINT



**Renewable Energy – Over 41% of energy consumed**



**33 Platinum rated Green Buildings;  
World's Greenest Luxury Hotels chain**



**ITC Windsor– world's first  
LEED Zero Carbon certified hotel**



**ITC Sankhya: World's First LEED Platinum  
Data Centre**



**Continuous Reduction in Specific  
Energy/Water Consumption**



# REPLENISHING NATURAL RESOURCES



**WATER**



**AFFORESTATION**



**BIODIVERSITY**



# ITC'S PAPER VALUE CHAIN LEVERAGING TECHNOLOGY & INNOVATION







Enduring Value



Clonal Saplings grown in Nursery









Round Colour Grading

## ITC'S AFFORESTATION INITIATIVE



# Greening over 8,75,000 acres



## • Social Contribution

➤ Providing Livelihoods to poor Tribals and Marginal Farmers

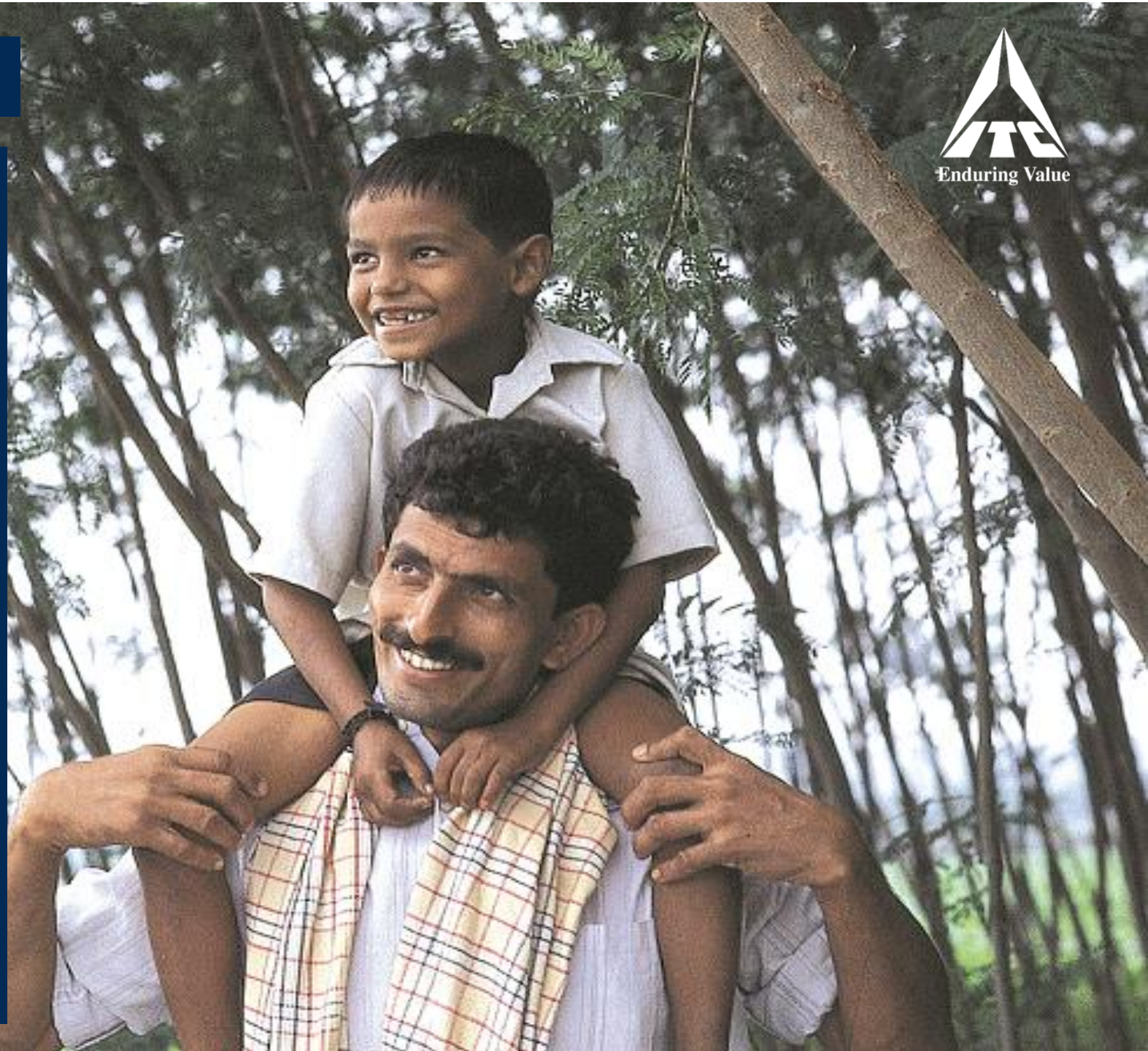
➤ Creating 160 million person days of employment

## • Environmental Impact

- Carbon Sequestration
- Augmenting Green Cover
- Top Soil Retention
- Water Recharge

## • Economic Benefit to ITC

➤ A Competitive Source of Pulp-wood for ITC's Paper mill





# POWERING THE PAPER VALUE-CHAIN



Packaging solutions



classmate

# BIODIVERSITY



**Ahmednagar, Maharashtra**



## **Actions**

- Eco-restoration of village commons & pasturelands
- Reduce pressures on forest through fringe area development

## **Spread & Coverage**

- Over 44,000 acres conserved across 7 States
- PPP with Wasteland Development Board of Rajasthan to restore 2,47,000 acre commons
- PPPs with Maharashtra & Telangana forest departments
- Knowledge partnership with IUCN to develop template for 'Sustainable Agriscapes'





**PIONEERING  
GREEN  
BUILDINGS**



buildings of the Company have achieved  
Platinum certification by USGBC-LEED/IGBC  
(as on 31<sup>st</sup> March, 2020).

**World's largest LEED Platinum Luxury  
Hotel – ITC Grand Chola, Chennai**

**World's Highest Rated LEED Platinum  
building – ITC Green Centre, Gurugram**

**World's First Hotel to be LEED Zero  
Carbon Certified – ITC Windsor, Bengaluru**





**41.3%**

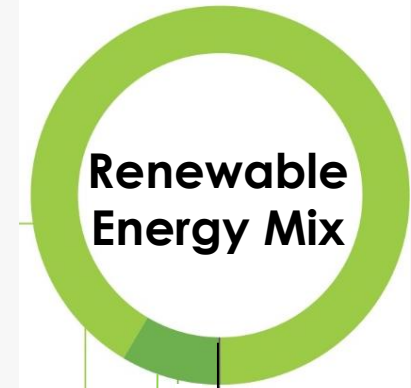
of ITC's energy is from  
renewable sources



12 ITC units met more than

**90%**

of their electrical energy  
requirements from renewable  
sources in 2020-21



91.5%  
Biomass

8.2%  
Wind

0.3%  
Solar





Enduring Value

# Addressing Water Security



# Climate Change in India's Agriculture



“.....The last time we saw crops was during our grandfather's time.....”



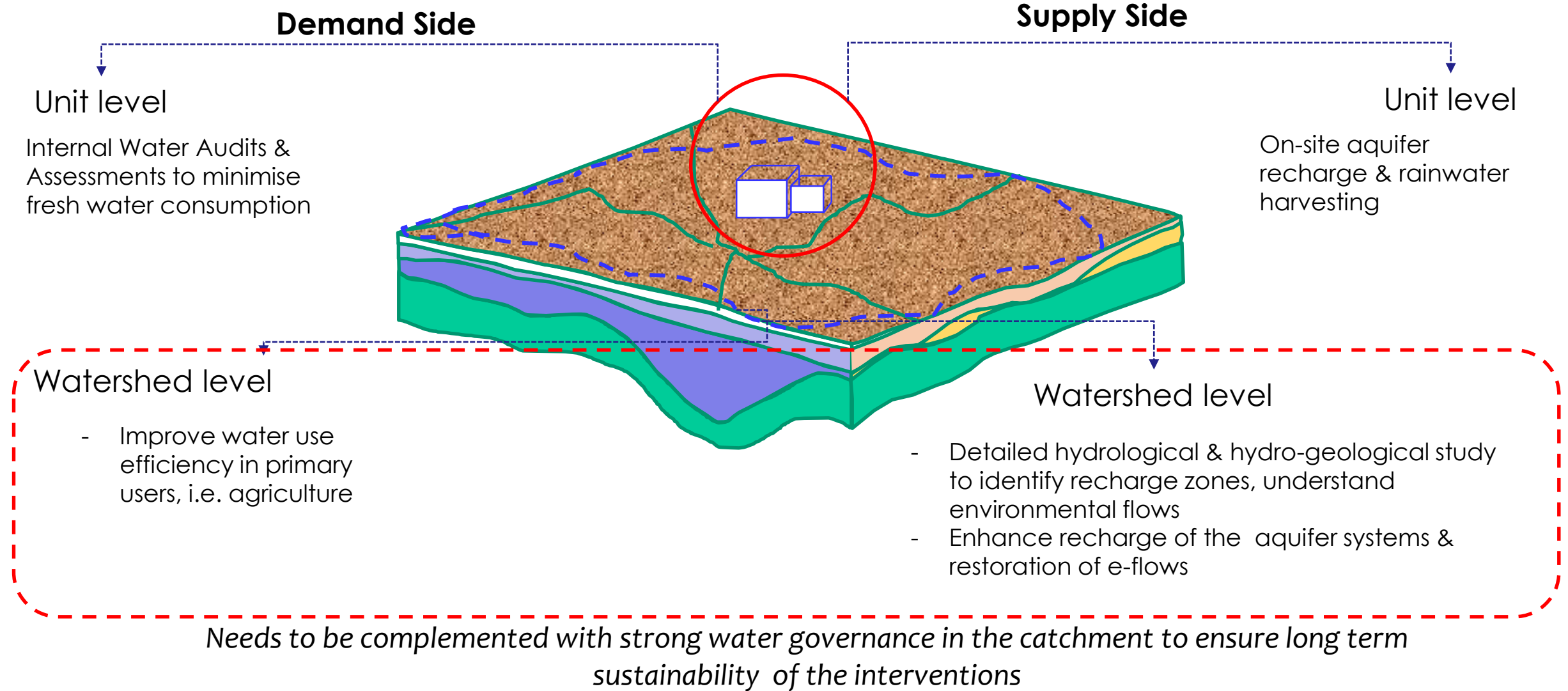


Water Security  
around  
catchments



Drought  
Proofing  
Agriculture

# Water Security: Our Approach







## PARTICIPATORY WATERSHED PLANNING



## RAINWATER HARVESTING POTENTIAL



1.2 MILLION  
ACRES

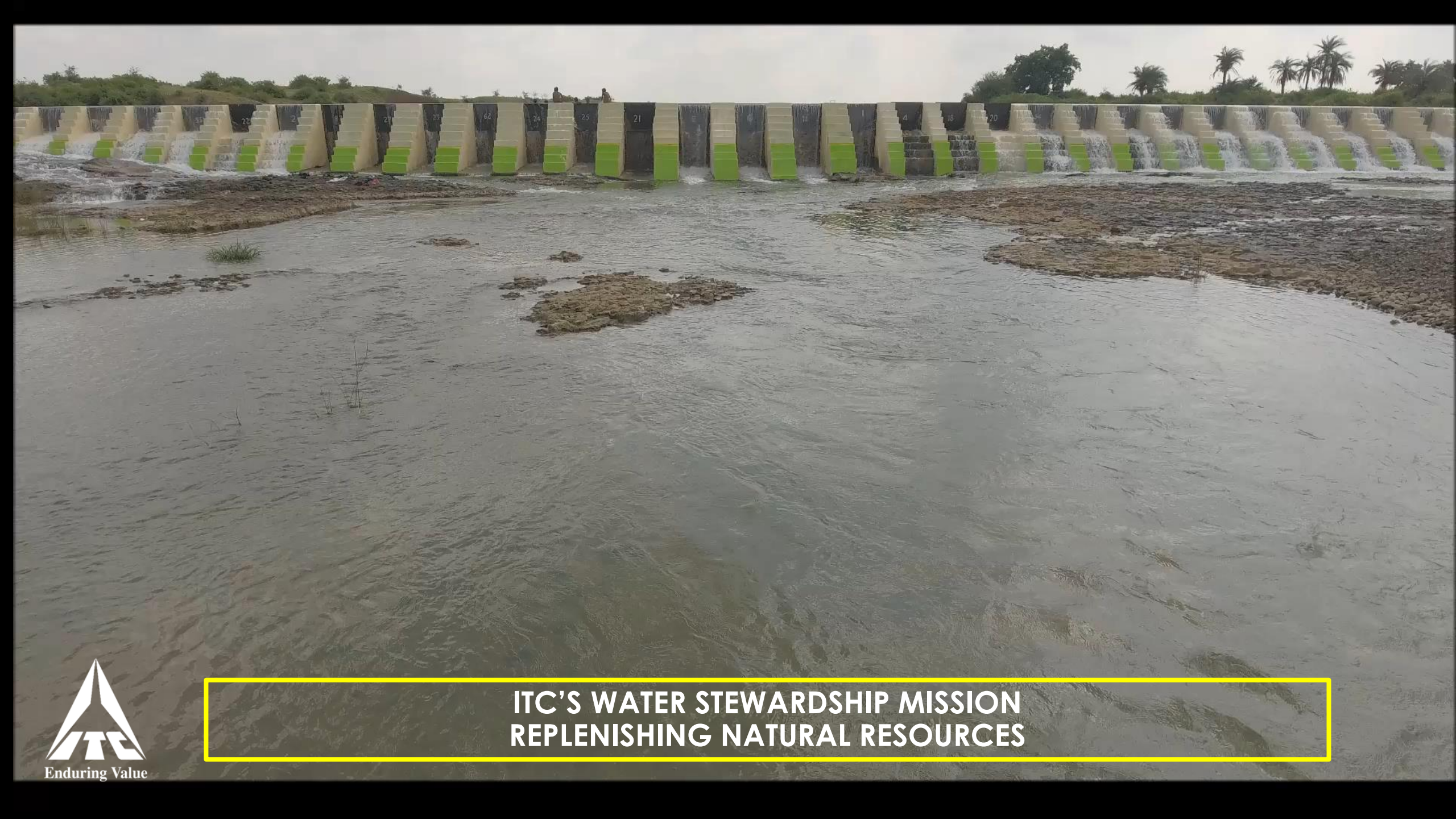
22,000  
WATER  
STRUCTURES

**5 times**

Net Water Consumption  
in 2030

Target





**ITC'S WATER STEWARDSHIP MISSION  
REPLENISHING NATURAL RESOURCES**



## WATER USER GROUPS







Enduring Value

# IMPROVING WATER USE EFFICIENCY IN AGRICULTURE 'MORE CROP PER DROP'

Sugarcane  
0.20 lakh acres



Pune: drip & Seedling

85.47 m cu.m  
water saved

Wheat  
2.34 lakh acres



Munger – Zero Till

72.62 m cu.m  
water saved

Rice  
0.36 lakh acres



Chandauli – DSR

46.80 m cu.m  
water saved

Others  
(Onion, Banana,  
Coconut)  
0.10 lakh acres



Coimbatore – Banana Drip

3.95 m cu.m  
water saved

- **Water Savings achieved in 1 year is 208 m cu.m as against 41.95 m cu.m of fresh water harvesting done in 20 years**
- Reduce water use and costs, improve yields
- 3.02 lakh acres covered



# UNIT WATER SECURITY PROGRAMME

- Ambitious plan to achieve water positive status in all its catchments
- Two phased approach
  1. Phase -1 (Offsets): Water harvesting equal to factory usage
  2. Phase -2 (Water Positive status): Fill entire catchment's water balance gap through supply & demand management work

*Programmes implemented in all units categorised critical by Central Groundwater Board (CGWB)*

CGWB Categorization	No of ITC units	Programme Implemented
Over Exploited	3	3
Critical	1	1
Semi-critical	4	3
Safe	18	9
<b>Total</b>	<b>26</b>	<b>16</b>





Next Generation  
Agriculture  
& Inclusive  
Growth



# POWERING NEXT GENERATION AGRICULTURE

Agri Sector Critical to India's Growth Story

Employs 50% of workforce but accounts for only 14% of India's GDP



## Core Challenges

- ✓ Productivity
- ✓ Sustainability
- ✓ Market Access



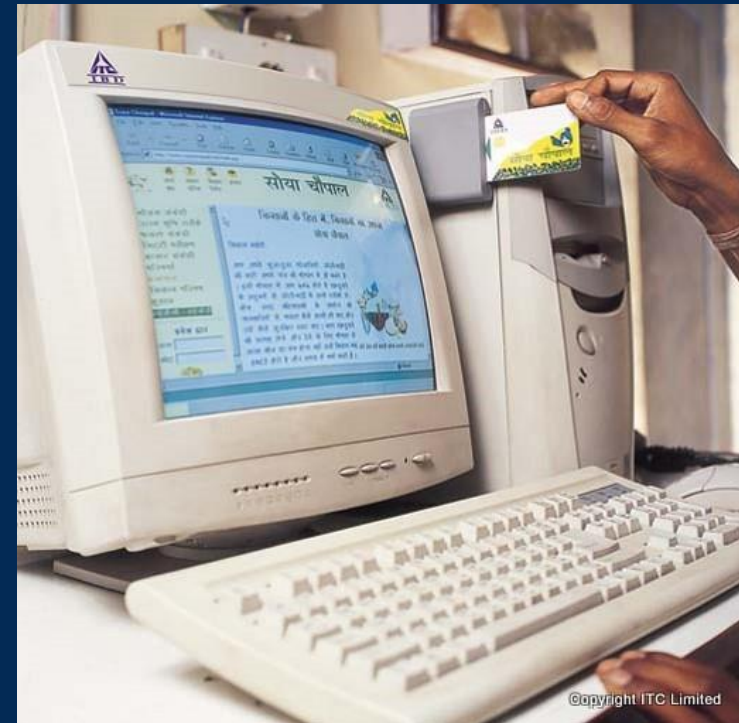
## ITC IN AGRICULTURE : E-CHOUPAL ECOSYSTEM



Empowering 4 Million Farmers



## e-Choupal Digital Infrastructure







# Demonstration Farms Choupal Pradarshan Khet





# ITC in Agriculture : **Baareh Mahine Hariyali**

## Leveraging Technology & Innovation to **Enhance Productivity**



**Varietal Improvement**



**Short Duration Varieties**



**Cropping Intensity**



**Choupal Pradarshan Khet**



**Water Management**



**Agri Best Practices**



**Zero Tillage**



**Farm Mechanisation**



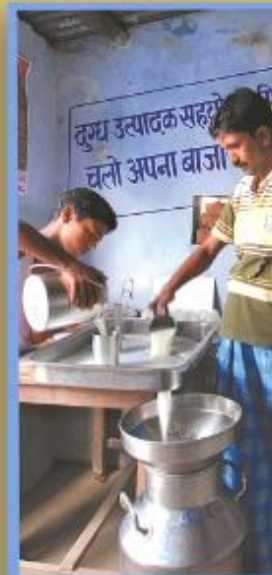


Collaboration with NITI Aayog for improvement of agriculture in 27 aspirational districts - trained 2.5 million farmers



# ITC FOODS BRANDS - DRIVING AGRI VALUE CHAINS

## ITC'S WORLD-CLASS INDIAN BRANDS ANCHOR INCLUSIVE VALUE CHAINS



Empowering the Nation's Farmers







Enduring Value

‘Phyigital Model’  
Metamarket for Advanced  
Agriculture and Rural Services.  
**ITC-MAARS**



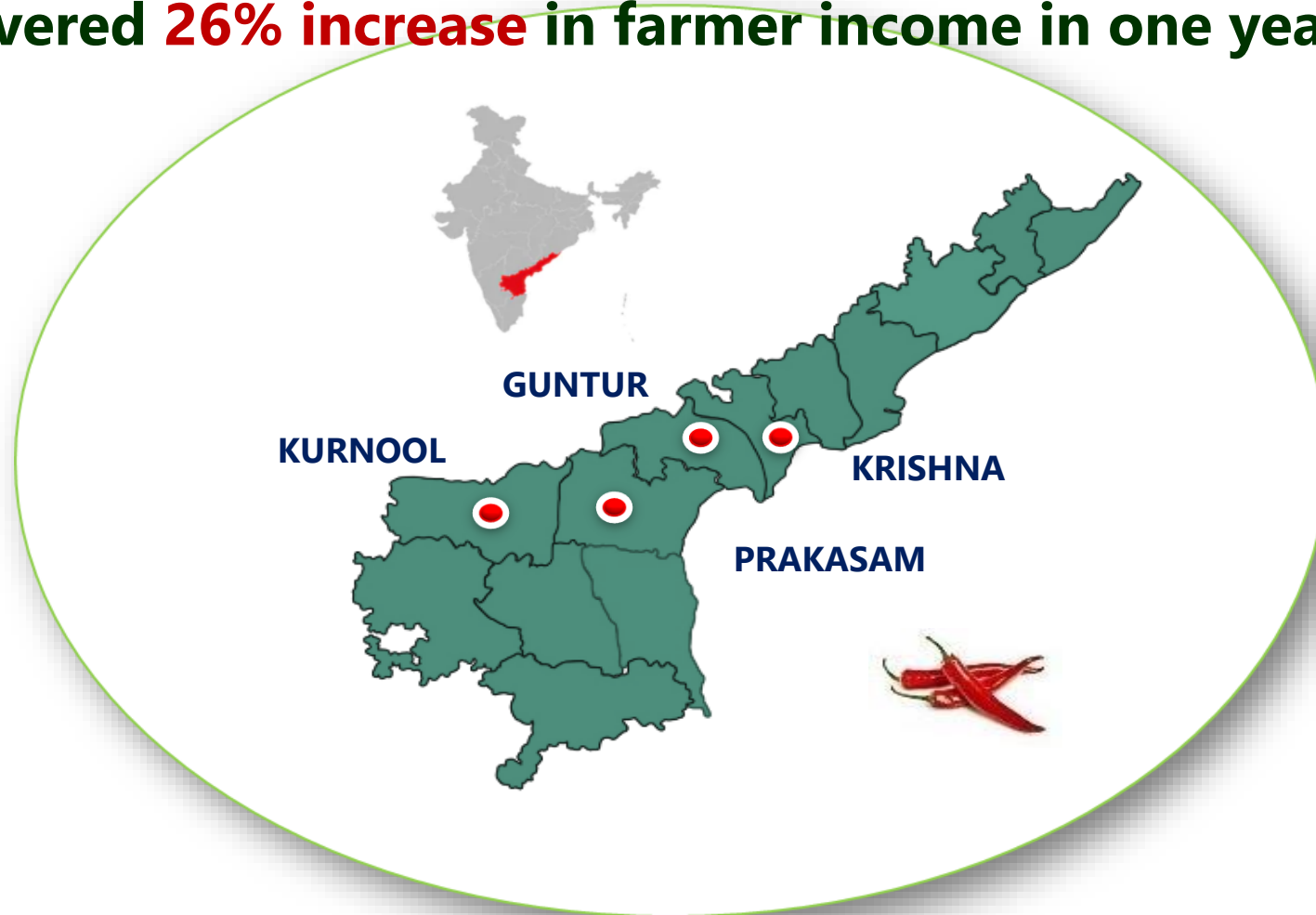
Leveraging the Digital Revolution to provide the full array of new  
age solutions  
to empower the farmer

**Aspiration to benefit 10 million farmers by 2030**



**An Illustrative Example in Andhra Pradesh, India**  
**Delivered 26% increase in farmer income in one year**

**25,000**  
**acres**



**10,000**  
**Farmers**



## General Farmer

**Productivity**  
**17.9**  
Quintals/Acre

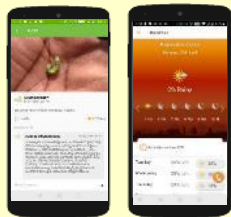
**Avg. Price**  
**100.1**  
Rs./Kg\*

\* As per 2020-21 season

**Cost of Cultivation**  
**56.6**  
Rs./Kg

**Farmer Net Returns**  
**77,631**  
Rs./Acre

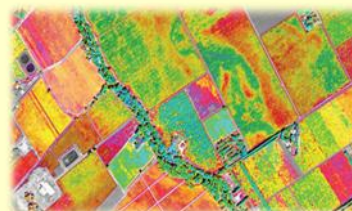
# Key Interventions



Digital Advisory



e-Krishi Sevaks / FPOs



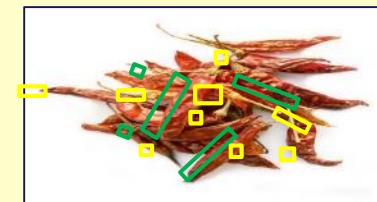
Remote Sensing



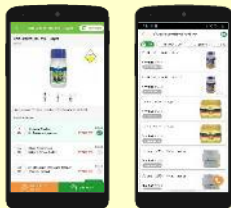
Crop Monitoring



Post-Harvest Technologies



Digital Quality Assaying



Input e-Marketplace



Drone Spraying Mechanization



Integrated Pest Mgmt. Kits

## Project Farmer

**Productivity**  
**20.1**  
Quintals/Acre

**Avg. Price**  
**104.1**  
Rs./Kg

**Cost of Cultivation**  
**55.2**  
Rs./Kg

**Farmer Net Returns**  
**99,080**  
Rs./Acre

**26% Increase in Net Returns**



# CLIMATE SMART AGRICULTURE



Weather  
Smart



Water  
Smart



Seed /  
Breed  
Smart



Carbon/  
Nutrient  
Smart



Market  
Smart

Covered over 2.5 lakh farmers across 8,000 villages.

A pilot at scale reduced GHG emission of select crops by 47%,  
whilst enhancing net returns to farmers between 41% to 87%.

The climate-smart agriculture initiative will be progressively extended to cover 3 million acres by 2030.





## Livestock Development

Providing integrated animal husbandry services to nearly 20,00,000 milch animals.





**Empowering women**  
**Over 78,000 rural women entrepreneurs**





**Skill Development Initiative**  
**Over 97,000 youth trained**





**ITC's Rural Education Programme  
Benefitting 825,000 children**





Nearly 38,400 individual sanitary units constructed



# TOWARDS A CIRCULAR ECONOMY – ITC WELL-BEING OUT OF WASTE (WOW)



- ✓ Covering 15 million citizens
- ✓ Livelihoods for 17,000 waste collectors



# MANAGING WASTE



**Running Behavioral Change Programmes for Citizens to Ensure Source Segregation**



**Creating Replicable, Scalable & Sustainable Models of Solid Waste Management**



**Sustaining & Enhancing ITC's Status as Solid Waste Recycling Positive**



**Ensuring that 100% of Packaging is Reusable, Recyclable or Compostable**

✓ **Plant to recycle Multi-Layered Plastic in Pune**

## ITC's solution for Pune's multi-layered plastic waste

Rujuta.Parekh  
@timesgroup.com

**Pune:** ITC Limited has collaborated with wastepickers' cooperative SWaCH and Shakti Plastic Industries to recycle multi-layered plastic (MLP) into plastic granules, thus, avoiding its dumping at Uruli Fursungi.

MLP is a material made using several layers of different polymers and a metallic film in some cases. It is mainly used for packaging of wafers, chocolates, biscuits, sauces, ready-to-eat-meals and other food products.

Under the initiative, 100 mega tonne (MT) of post-consumer MLP waste has been recycled into plastic granules. MLP disposal became one of the biggest challenges in Pune after the state government's ban on single-use plastics in March last year.

A survey conducted by SWaCH last year had found that MLP formed the largest component of plastic waste collected in the city. A wastepicker percep-



The ITC Limited facility for recycling MLP waste into plastic granules

scrap dealers would not even accept it. Due to this, for nearly the last decade, MLP waste was going to the landfill."

"The product, which had no value earlier, now fetches us Rs 2.5/kg. We receive the payment at the end of the month," the wastepickers said.

According to Harshad Barde from SWaCH, nearly two tonnes of MLP is gathered and sent for sorting and baling to a centre at Fursungi on a daily basis. "SWaCH has a network of 3,500

decentralizing the process and having such facilities in different parts of the city to reduce the transportation cost and increase efficiency," he said.

The MLP which reaches Palghar is shredded before further processing. "The material is then run through a wash to clean it. After drying, the MLP is converted into lumps using hot water. The lumps are again shredded. These shreds are then put into a machine that converts the material into plastic strings. A cutter at the end of the machine then cuts the strings into granules," Rahul Poddar from Shakti Plastic Industries said.

The granules are then sold to manufacturers of plastic products like chairs, buckets, mugs, stationery and others. Chitranjan Dar, the group head of environment, health and safety, projects and R&D at ITC Limited, said, "We had been looking intently at SWaCH for the last 5-6 years as they had a formula for waste collection, which was not present anywhere else in the country. We thought of partnering with them on MLP recy-



### Bio-degradable boards



Completely Biodegradable  
under composting conditions



Barrier against liquids/grease  
etc. at par with traditional  
plastic coated boards



**Omega Bev** : Exclusively for  
paper cups



**Omega Barr** : Deep freeze  
applications

### Recyclable boards



Completely recyclable in  
existing standard recycling  
conditions



Excellent oil and grease  
resistant properties



**Filo Serve** : Food serving  
applications



**Filo Pack** : Food delivery  
application

### Sustainable Packaging



#### Bio-Seal

*Bio compostable packaging solutions for  
packaged/fast-food & Personal Care industries.  
Launched on commercial scale.*



#### Oxy Block

*Recyclable structure to provide barrier properties  
for packaged foods, edible oils etc.  
Commercialisation under progress*





## SCALE AND IMPACT

- **6,100** e-Choupals, **35,000** villages, **4 million** farmers
- **8,75,000** acres of forestry
  - **160 million** person-days of employment
- **12,53,000** acres of watershed development
- **20,00,000** milch animals covered
- **8,25,000** children benefiting from supplementary education
- **78,000** sustainable livelihoods for rural women
- **97,000** youth trained through Vocational Training programmes
- **38,400** Sanitation Units





# SOCIAL INVESTMENT INITIATIVES

## Horizon 1- Sustainable Livelihoods Today

### Social Forestry



Achieved: 394,678\*  
Target: 630,000\*

### Watershed Development



Achieved: 1,231,251\*  
Target: 2,200,000 \*

### Sustainable Agriculture



Achieved: 771,119\*  
Target: 3,000,000\*

### Biodiversity



Achieved: 44,044\*  
Target: 250,000\*

### Women's Empowerment



Covered: 77,851  
Target: 150,000

## Horizon 2: Creating Capabilities For Tomorrow

### Education



Achieved: 808,462  
Target: 1,300,000

### Youths Trained



Achieved: 93,980  
Target: 282,000

### Waste Management (Households)



Achieved: 731,272  
Target: 600,000

### Toilets Built



Achieved: 38,153  
Target: 40,000

\* - in acres





Enduring Value

## CONTRIBUTIONS TO UN SDG'S



Women's  
Economic  
Empower-  
ment

Climate  
Smart  
Agriculture

Integrated  
Animal  
Husbandry



Sustainable  
Products

Sustainable  
Supply Chains

Sustainable  
Agriculture

Integrated  
Animal  
Husbandry



Primary  
Education



Diversity  
and Equal  
Opportunity

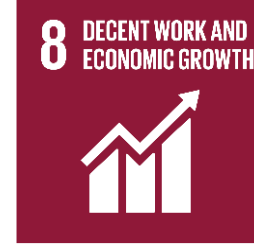
Women's  
Economic  
Empower-  
ment



Water  
Security for  
All

Sanitation &  
Solid Waste  
Mgmt

Primary  
Education



Occupational  
Health &  
Safety

Vocational  
Training

Women's  
Economic  
Empowerment



Climate  
Resilience

Managing  
Waste



Climate  
Resilience

Social  
Forestry

Climate  
Smart  
Agriculture

Integrated  
Animal  
Husbandry

Water  
Security  
for All



Water  
Security  
for All

Climate  
Smart  
Agriculture

Social  
Forestry



# Governance & ESG Oversight



# GOVERNANCE : Trusteeship, Transparency, Ethical Conduct

## 3-Tiered Governance Structure

**Board of Directors**

*Strategic Supervision*

**Corporate Management  
Committee**

*Strategic Management*

**Divisional Management  
Committees**

*Executive Management*

**Trusteeship,  
Transparency,  
Ethical Conduct**

**Audit Committee**

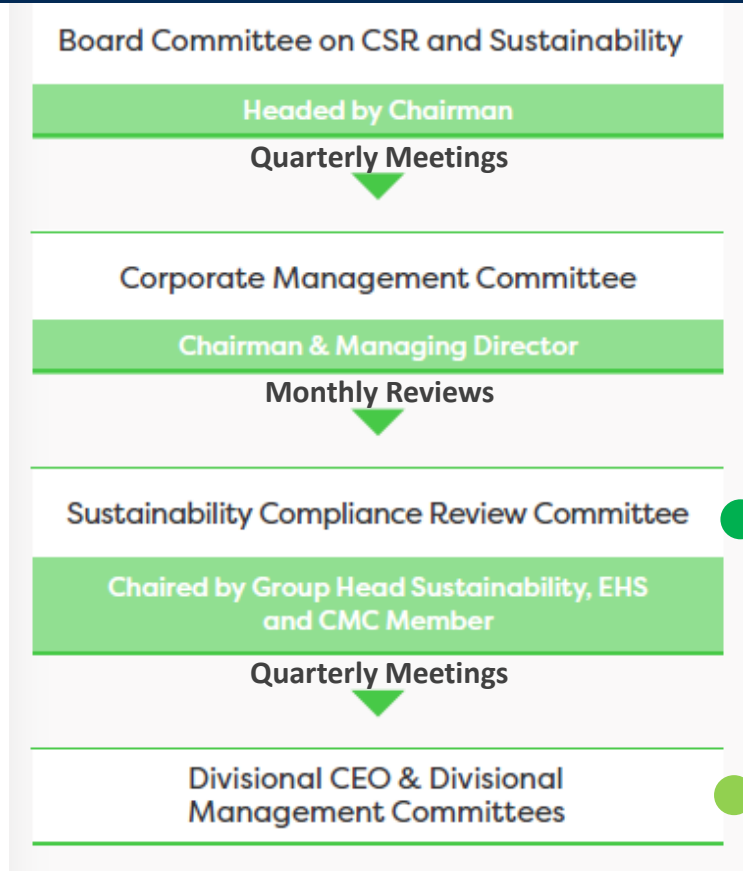
**Nomination &  
Compensation  
Committee**

**Independent  
Directors  
Committee**

**Securityholders  
Relationship  
Committee**



# ESG OVERSIGHT @ ITC



The SCRC presently comprises **seven senior members** of management, with its Chairman being **Group Head – Sustainability & R&D**, and a **member of the Corporate Management Committee**. Other members represent:

- EHS & Sustainability
- Human Resources
- Accounts & Procurement
- Legal
- Social Investments Programmes
- Corporate Communications

ITC Businesses also have Business-level Sustainability Committees.

**These Sustainability Committees also have representation from Diverse Functions - Operations, EHS & Sustainability, Nutrition, Marketing, HR, Packaging, R&D & Finance.**



# ESG POLICIES

ITC's Suite of Board approved ESG Policies addresses ITC's Material ESG issues, and is also aligned to the requirements of Global ESG Disclosure Frameworks:



Policy implementation is monitored using defined KPIs.

SCRC reviews implementation on a quarterly basis and submits its report to the CMC.

The CSR & Sustainability Committee of the Board reviews progress annually.

ITC's ESG Policies:

- Policy on Sustainable Supply Chain and Responsible Sourcing
- Code of Conduct for Suppliers and Service Providers
- Policy on Environment, Health and Safety
- Policy on Resource Efficiency
- Policy on Biodiversity Conservation
- Policy on Deforestation
- Policy on Stakeholder Engagement
- Policy on Responsible Advocacy
- Policy on Product Responsibility
- Policy on Freedom of Association
- Policy on Diversity and Equal Opportunity
- Policy on Prohibition of Child Labour and Prevention of Forced Labour at the Workplace
- Policy on Tax
- Code of Conduct
- CSR Policy
- **Remuneration Policy (*with linkages to ESG performance*)**

Other Policies are there at the Business Level like Responsible Marketing, Animal Welfare, Food & Nutrition





Consumers  
Partners  
Supply-Chain



# HELPING CONSUMERS MAKE SUSTAINABLE CHOICES

## ITC Life Sciences & Technology Centre



**Over 350 scientists and  
900 patents filed**

**Delivering Future Products  
Aimed at Health, Hygiene,  
Immunity and Well-being**

ITC-LSTC has been recently acknowledged as one of the leading and largest innovation centres in India with strong presence in nutrition, health and well-being, plant breeding, genetics, microbiology, genomics and proteomics.

Centres of Excellence established in Biosciences, Agri-sciences and Materials among others.

Future-ready platforms put in place, in areas aligned to market opportunities, enabling agile and purposeful innovation.



# 120+ New Launches in FY21

# Insight + Innovation >> Impact

## Hygiene++, Protection & Care



### Savlon

Hexa range, Disinfectants, Masks & Wipes



### Nimyle

Floor Cleaner

### Nimwash

Fruits & Veggie Cleaner;  
Nimeasy Dish Wash Gel

## 'Good For You' & 'Free From'



### Aashirvaad Nature's Super Food Organic Atta & Dals



### Sunfeast Digestive Range



### Aashirvaad Crystal & Proactive Salt



### B Natural Soups & Juices

## Convenience & On-the-Go



### Aashirvaad On-the-Go Range



### Aashirvaad Ready to Cook



### ITC Master Chef All purpose Gravies



### ITC Master Chef Frozen Snacks



### ITC Farmland Frozen Vegetables



### Sunbean Beaten Coffee



Global Platinum Level  
certification by DNV



The WeAssure programme is ITC Hotels' commitment towards health, hygiene and safety, designed in collaboration with medical professionals and disinfection experts to further enhance the existing hygiene and cleaning protocols.

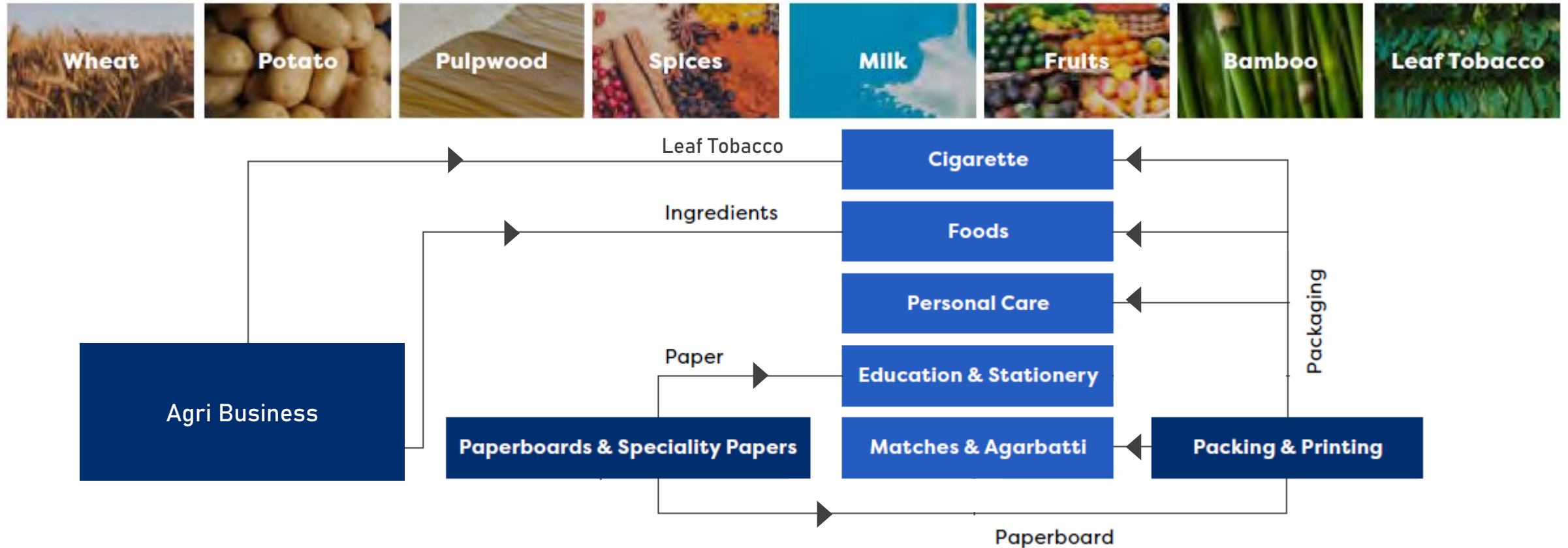




# SUPPLY CHAIN – VERTICALLY INTEGRATED






## ITC Brands

Empowering Indian Farmers and anchoring inclusive and sustainable value chains.





# KEY AGRI COMMODITIES – SUMMARY OF INTERVENTIONS

	Leaf Tobacco	Wheat	Pulpwood	Spices & Chilli	Potato	Dairy
ITC Brands	Cigarettes					
Major Risks in the Supply Chain	Deforestation	Water Scarcity	Deforestation	Safety & Quality	Quality	Safety & Quality
	Human Rights	Soil Health	Soil & Biodiversity	Pesticide Use	Climate Resilience	
	Climate Resilience	Climate Resilience	Climate Resilience			
	Pesticide Use	Productivity				
ITC's Region Specific Interventions	Energy Plantations, Alternate Fuel	R&D - Climate Resilient Varieties	ITC's Social & Farm Forestry	Integrated Crop Management	Climate Resilient & Superior Varieties	Farmer-led Collection Model
	Energy Conservation in Barns	Zero Tillage, Crop Nutrition	High Yielding Disease Resistant Saplings	Food Safe Systems	Efficient Irrigation Practices	Extension Services – Productivity, Hygiene
	Human Rights & Farm Safety Audits	E-Choupal – Market Linkage	Agro Forestry, Inter Cropping	Good Agricultural Practices (GAP)	Integrated Pest Management	
	Climate Smart Hybrids		Extension Services, Soil Health Mgmt.	Organic Production		



# TRACEABILITY & CERTIFICATIONS

	Leaf Tobacco	Wheat	Pulpwood	Spices & Chilli	Potato	Dairy
ITC Brands	Cigarettes					
Traceability	 ITC e-Choupal 4.0 Crop Monitoring Tool	 ITC e-Choupal Network 6100 Kiosks, 35,000 Villages	 Chain of Custody Certification	 ITC e-Choupal 4.0 Crop Monitoring Tool	Direct Linkages to Farmers through Programmes on Seed Potatoes, and Sustainable Agriculture	Farmer-led Collection Model - Enables Farmer-wise, Village-wise Tracing
Certification	Sustainable Tobacco Programme 2.0 (STP 2.0) Audits	-		  	-	-





Enduring Value



Enduring Value

Nurturing the  
Workplace of  
Tomorrow



# DIVERSITY & EQUAL OPPORTUNITY

- ▶ With women constituting about 73% of the workforce, ITC's Pudukkottai unit in Tamil Nadu is a beacon of diversity with regard to employment of women
- ▶ ITC's Foods unit at Nanjangud in Karnataka is the first FMCG factory in the region to deploy women workforce across all shifts. Women constitute close to 62% of the workforce at the Nanjangud unit.
- ▶ ITC now employs 47 differently abled persons across business, and continues to guide industry initiatives to create inclusive workplaces



## Reflections Series

### Inspiring stories



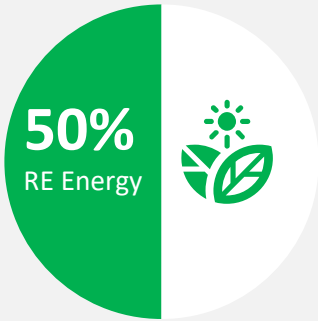


# RE!MAGINING THE FUTURE

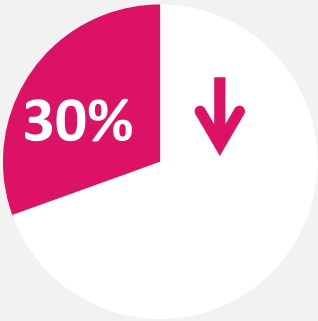
Sustainability 2.0  
A Bolder & Ambitious  
Agenda



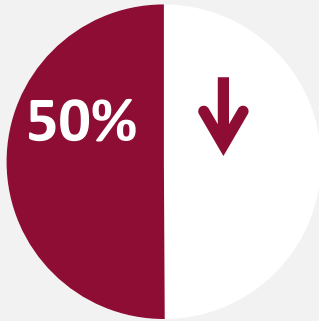
Renewable  
Energy (RE)



Specific Energy  
Consumption\*



Specific GHG  
Emissions\*



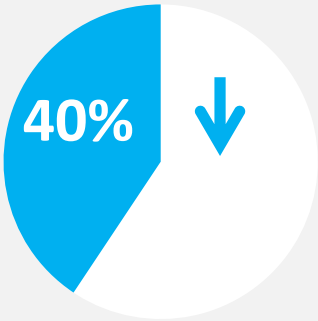
Sustainable  
Packaging Plan



Supporting Sustainable  
Livelihoods



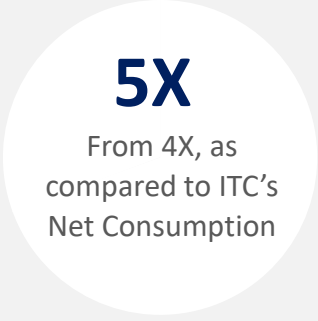
Specific Water  
Consumption\*



Water Security  
for All



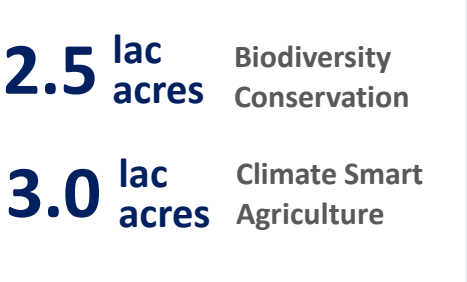
Rainwater Harvesting  
Potential



Plastic Neutrality



Biodiversity & Agriculture



\*2018-19 Baseline

Proactively work towards achieving 'Net Zero' emission status.



A passion for  
profitable growth....



.....in a way that is sustainable.....



.... and  
inclusive



Enduring Value

*Sab*  
*Saath*  
*Badhein*

---

NATION FIRST

THANK YOU